

Evros - GREECE Flood - 01/02/2015 Delineation Map - 02 Detail

Production date: 08/02/2015

Cartographic Information

1:65000

Full color ISO A1, low resolution (100 dpi)

0 1.25 2.5 5 km
Map Coordinate System: WGS 1984 UTM Zone 35N
Graficule: WGS 84 geographical coordinates



Legend

Crisis Information

Flooded Area (07/02/2015 16:16 UTC)

General Information

Area of Interest

Administrative boundaries

International Boundary

Settlements

Populated Place

Built-Up Area

Hydrology

River

Stream

River

Industry / Utilities

Quarry

Transportation

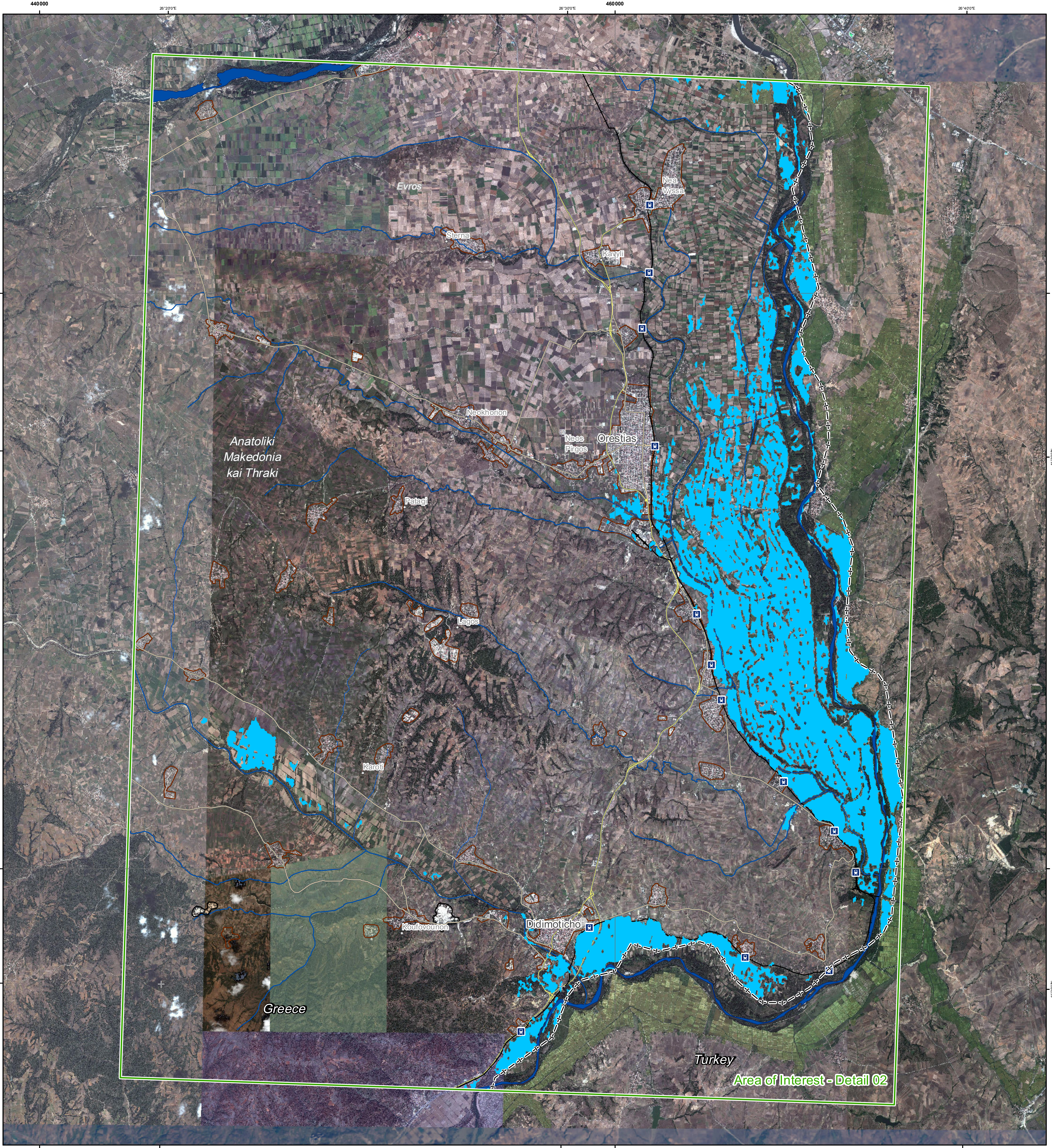
Helipad

Railway

Primary Road

Secondary Road

Consequences within the Detail AOI on 07/02/2015 on Greek territory			
		Affected	Total in AOI
Flooded area	ha	6 380	
Estimated population	Inhabitants	1 593	52 250
Settlements	Built-Up Area	9.6	2 746
	Station	No.	1
Transportation	Railway	km	4.2
	Primary Road	km	1.3
	Secondary Road	km	0.4
Utilities	Quarry	ha	0
	Helipad	No.	0
	Station	No.	1
	Helipad	No.	0
	Quarry	ha	0
	Helipad	No.	1
	Quarry	ha	0
	Helipad	No.	1
	Quarry	ha	0



Map Information

Due to extensive rainfall of the last few days the areas around Evros river are affected from severe floods which are damaging agriculture land, road and railway network. Major flood problems have been reported in the south part of the river. Many embankments across Evros river were broken, causing further problems in populated places. Some villages were partially evacuated.

Data Sources

Inset maps based on: Administrative boundaries (URC 2013, GISCO 2010, © EuroGeographics), Landsat-8 © U.S. Geological Survey (acquired on 04/11/2014, GSD 30 m, approx. 2% cloud coverage), COSMO-SkyMed © ASI 2015 (acquired on 07/02/2015 16:16 UTC, GSD 22m) provided by e-GEOS S.p.A., all rights reserved.
Base vector layers based on OpenStreetMap © OpenStreetMap contributors, Wikimapia.org, GeoNames, GADM (approx. 1:10000, extracted on 12/12/2014), refined by SIRS. Source information is included in vector data.
Elevation data: SRTM (90 m posting). Height in meters above mean sea level.
Population data: Landscan 2010 © UT BATTTELLE, LLC.
All Data sources are complete and with no gaps.

Dissemination/Publication

Delivery formats are GeoTIFF, GeoPDF, GeoJPEG and vectors (shapefile and KML formats).

Framework

The products elaborated in the framework of current mapping in rush mode activation are realized to the best of our ability, within a very short time frame during a crisis, optimising the available data and information. All geographic information has limitations due to scale, resolution, date and interpretation of the original data sources. The products are compliant with GIO-EMS RUSH Product Portfolio specifications.

Map Production

The present map shows the flood delineation in the area of Evros (GREECE). The basic topographic features are derived from public datasets, refined by means of visual interpretation of pre-event Landsat images. The thematic layer, assessing the delineation of the event, has been derived from post-event COSMO-SkyMed imagery.
All satellite images have been radiometrically enhanced, orthorectified with RPC approach (using SRTM elevation data) and georegistered to pre-event imagery.
The estimated geometric accuracy of this product is 60 m CE90 or better, based on previous experience in using high-resolution SAR for flood extent delineation. Please be aware that the thematic accuracy might be lower in urban and forested areas due to known limitations of the analysis technique.
Only the area enclosed by the Area of Interest has been analyzed within the Greek territory.
Map produced on 08/02/2015 by SIRS under contract 257219 with the European Commission. All products are © of the European Commission.
Name of the release inspector (quality control): e-GEOS (ODO).
E-mail: rush@ems-gmes.eu