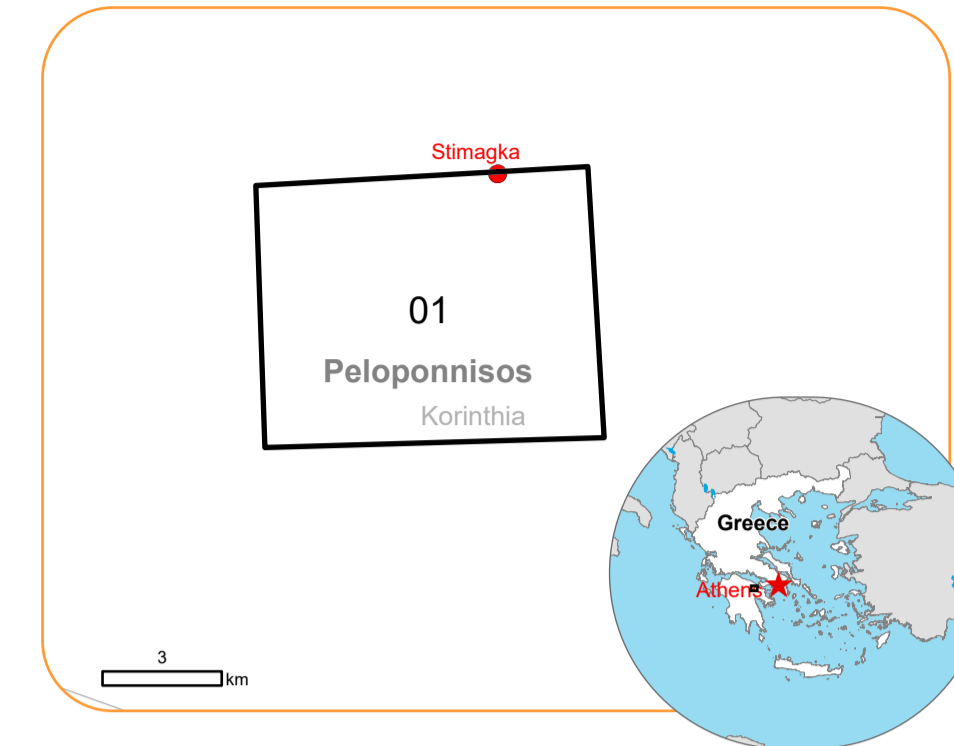


EMSR737 - AOI01
Wildfire in Greece
STIMAGKA

Situation as of 13/07/2024 09:05 UTC
 Delineation - Overview map 01



Burnt area 524.5 ha **Potentially affected population ~ 40**

Potentially Affected Built-up and Transportations

Road 5.6 km

- | | |
|----------------------------------|-----------------------|
| Crisis Information | Hydrography |
| Burnt area | River |
| General Information | Stream |
| Area of Interest | Lake |
| Not Analysed | Facilities |
| Administrative Boundaries | Power plant |
| Municipality | Transportation |
| Placenames | Local road |
| Placename | Track |
| Built-Up Area | |
| Residential | |
| Non residential | |

	Current		Forecast	
	13 July 09:00 UTC	14 July 09:00 UTC	14 July 09:00 UTC	15 July 09:00 UTC
Wind direction and speed	3 km/h	4 km/h	4 km/h	4 km/h
Temperature and relative Humidity	30° 34%	29° 42%	30° 36%	

Data retrieved from ECMWF on July 13, 09:00 UTC. Calculated at: 37°59'19.98"N, 22°41'52.93"E

Event On 11 July 2024 at 10:40 UTC, a wildfire near Stimagka village is reported to have affected forest land in Northern Peloponnese, at Korinthia. The event is ongoing mainly in gorges. A large number of firefighters (200), volunteers, fire engines (53), water tankers (11), construction machinery (2), airplanes (14) and helicopters (15) were mobilized to suppress the fire. Copernicus EMS Rapid Mapping is requested to provide wildfire extent emergency mapping.

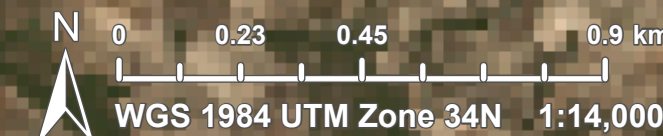
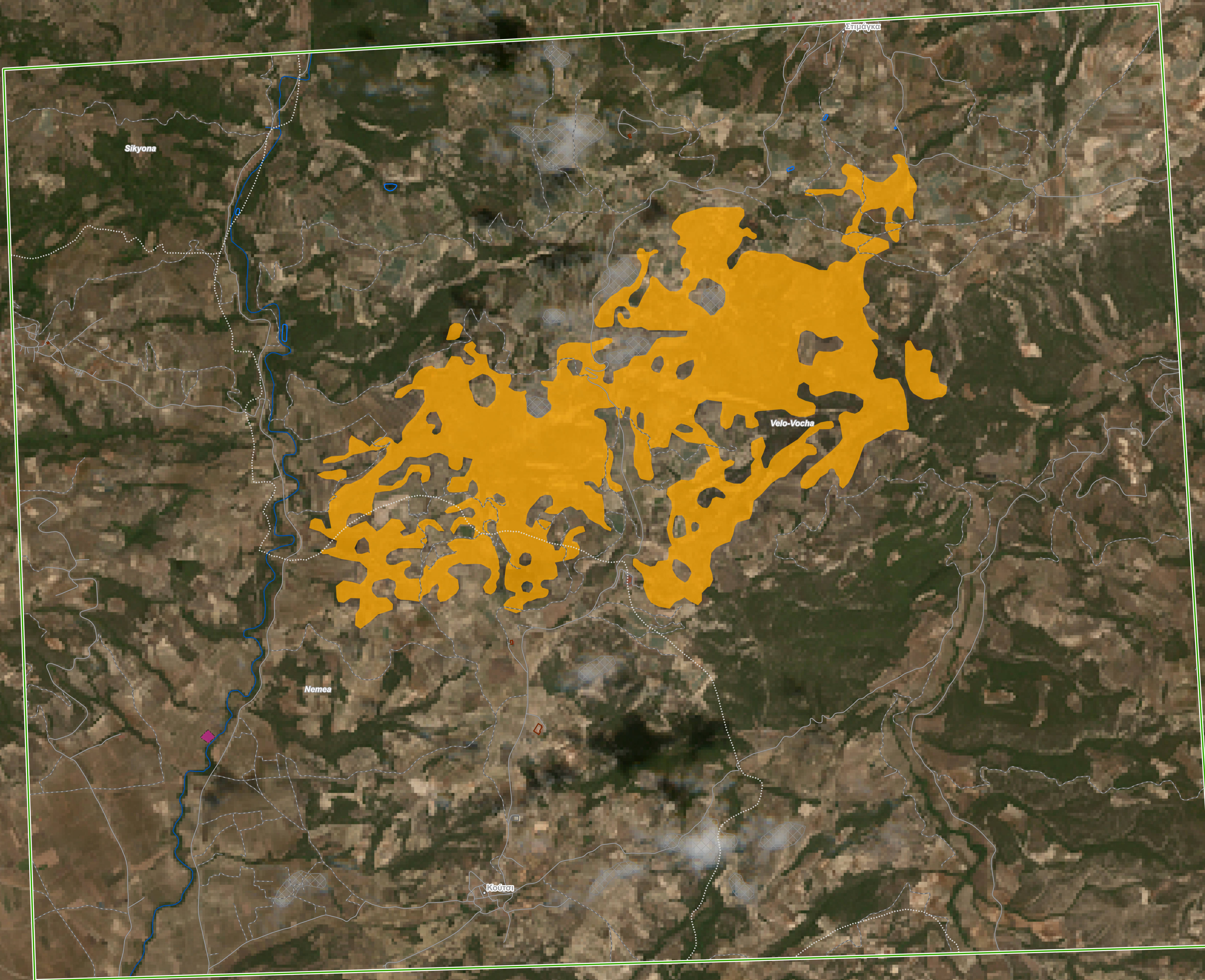
Data sources and analysis: Pre-event image: Sentinel-2A/B (2024) (acquired on 11/07/2024 at 09:20 UTC, resolution 20.0 m). Post-event image: Sentinel-2A/B (2024), (acquired on 13/07/2024 at 09:05 UTC, resolution 20.0 m). This image is used as background image.

All images are provided under COPERNICUS by the European Union and ESA, all rights reserved.

The thematic layer has been derived from post-event satellite image using by means of visual interpretation.

Map produced by Telespazio Iberica released by e-GEOS on the 13/07/2024.

Details on this activation and service conditions available through the QR code or at the link: <https://rapidmapping.emergency.copernicus.eu/EMSR737>



Consequences within the AOI				
		Unit of measurement	Affected	Total in AOI
Burnt area		ha		524.5
Estimated population		Number of inhabitants	~ 40	~ 850
Transportation	Local Road	km	1.0	54.5
	Cart Track	km	4.6	89.3
Facilities	Power plant constructions	ha	0	0.5
Land use	Shrub and/or herbaceous vegetation association	ha	295.9	1,206.4
	Permanent crops	ha	154.1	3,300.3
	Heterogeneous agricultural areas	ha	72.9	606.6
	Forests	ha	1.6	569.9
	Other	ha	0	3.9

Disclaimer:

Full disclaimer and other helpful information available in the online manual:
<https://emergency.copernicus.eu/mapping/ems/online-manual-rapid-mapping-products>
 © European Union / Copernicus Emergency Management Service

Data Access:

All data displayed on the map(s), as well as the Physiography and Land Use - Land Cover layers, are available in the Crisis Information Package and the Base Layer Package (for reference data). The table above is available in editable format in the Crisis Information Package. All products and data are also available for download on the portal.

Access to the portal



Estimated Population:

Estimated population is based on Copernicus Global Human Settlement Layer (GHSL) dataset. Additional population datasets and analysis are available in the summary table.

Data Sources:

Base vector layers: OpenStreetMap © OpenStreetMap contributors (2024), Wikimapia.org, GeoNames 2015, Corine Land Cover (CLC) 2018, EuroBoundaryMap 2017 ©EuroGeographics.
 Inset maps: JRC 2013, GISCO 2010 © EuroGeographics, Natural Earth 2012, CCM River DB © EUJRC2007, GeoNames 2015.
 Digital Elevation Model: COP-DEM-EEA-10-R product

