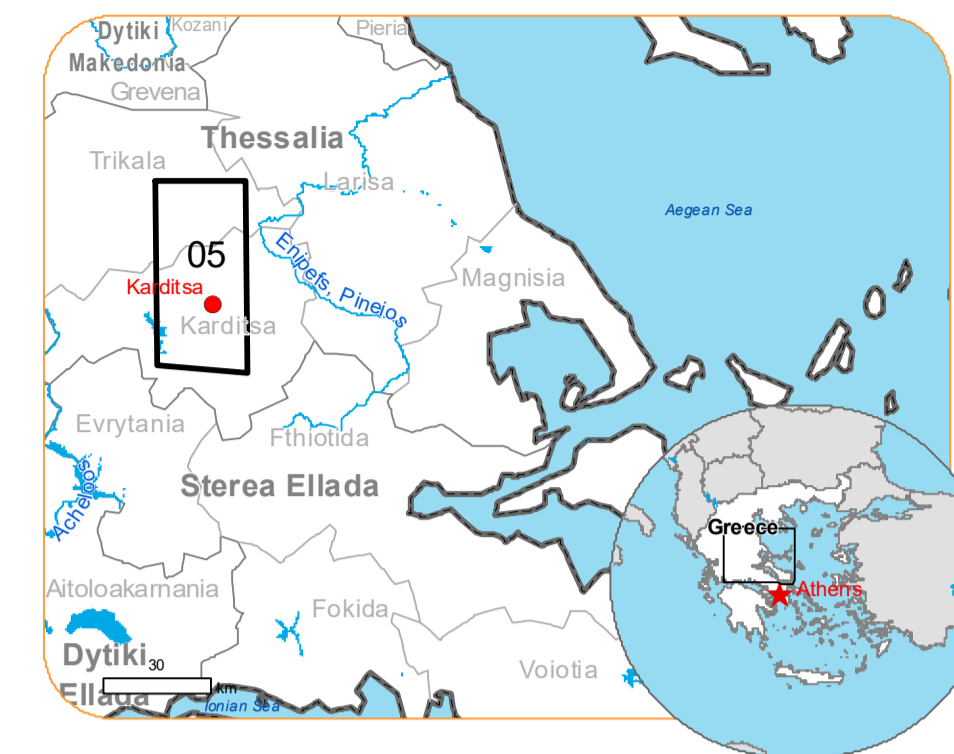




Situation as of 10/09/2023 09:15 UTC

Delineation - Overview map 01



Flooded area 18.519,2 ha
 Flood trace 10.472,0 ha
 Potentially affected population ~ 7.100

Potentially Affected Built-up and Transportations

Railway 5.7 km
 Road 399.2 km
 Built-up 601.0 ha

- | | | |
|---|--------------------------------------|-------------------|
| Crisis Information | Hydrography | — Main road |
| ■ Flooded Area | — River | — Local road |
| ▨ Flood trace | — Stream | — Railway |
| General Information | □ Lake | — Airfield runway |
| □ Area of Interest | □ Land Subject to Inundation | □ Airfield |
| □ Image Footprint | □ Reservoir | |
| Administrative boundaries | Facilities | |
| — Municipality | — Long-distance pipelines or lines | |
| Placenames | — Dam | |
| ○ Placename | ■ Mining or extraction site | |
| Built-Up Area | ■ Power plant | |
| □ Residential | ■ Sport and recreation constructions | |
| □ Non residential | ■ Water or Aquatic infrastructure | |
| □ School, university and research buildings | ■ Dam | |
| □ Hospital or institutional care buildings | Transportation | |
| □ Military | — Highway | |

Event:
 Due to extreme rainfall in Thessaly Region, extended floods occurred in Magnesia Regional Unit, mostly around the city of Volos and coastal areas of Pelion mountain peninsula. Extreme rainfall is ongoing and according to the forecast of the National Meteorological Service the rainfall will continue until tomorrow afternoon. One person is missing, and one died, and many cars were drifted away due to the flooding. Local Fire Service received many calls for help to pump water from flooded buildings and rescue people trapped by the rising waters. Copernicus EMS Rapid Mapping is requested to provide initial rough estimation, flood extent and monitoring of the event for the emergency mapping.

Data sources and analysis: Pre-event image: Sentinel-2A/B (2023) (acquired on 31/08/2023 at 09:15 UTC, resolution 10.0 m). Post-event image: Sentinel-2A/B (2023) (acquired on 10/09/2023 at 09:15 UTC, resolution 10.0 m). This image is used as background image. All images are provided under COPERNICUS by the European Union and ESA, all rights reserved.

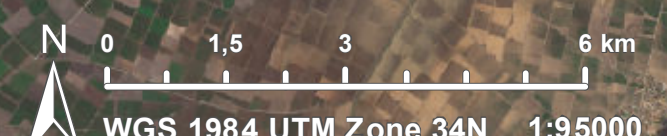
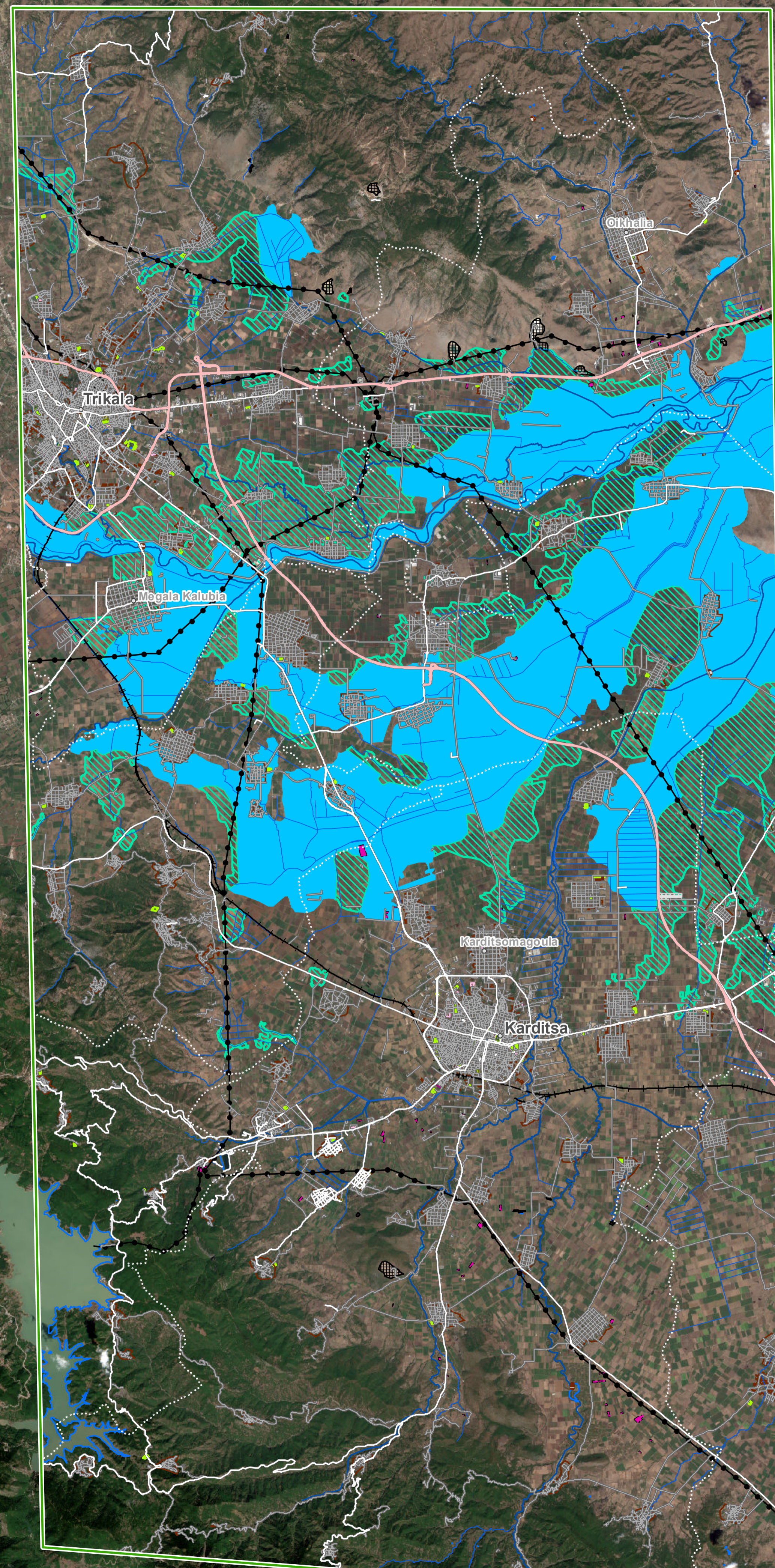
Base vector layers: OpenStreetMap © OpenStreetMap contributors (2023), Wikimapia.org, GeoNames 2015, Corine Land Cover (CLC) 2018, EuroBoundaryMap 2017 © EuroGeographics.
 Inset maps: JRC 2013, GISCO 2010 © EuroGeographics, Natural Earth 2012, CCM River DB © EUJRC2007, GeoNames 2015.

Population data: GHS Population Grid © European Commission, 2023
https://ghsl.jrc.ec.europa.eu/ghs_pop2023.php
 Digital Elevation Model: SRTM (30 m) (NASA/USGS)

The thematic layer has been derived from post-event satellite image by means of visual interpretation.

Map produced by e-GEOS released by SERTIT on the 11/09/2023.

Details on this activation and service conditions available through the QR code or at the link:
<https://rapidmapping.emergency.copernicus.eu/EMSR692>



Consequences within the AOI				
		Unit of measurement	Affected	Total in AOI
Flooded area		ha		18.519,2
Flood trace		ha		10.472,0
Estimated population		Number of inhabitants	~ 7.100	~ 130.000
Built-up	Residential Buildings	ha	559,2	6.220,8
	Office buildings	ha	0,5	17,2
	Wholesale and retail trade buildings	ha	0,0	14,1
	Industrial buildings	ha	37,8	271,3
	School, university and research buildings	ha	1,0	57,9
	Hospital or institutional care buildings	ha	0,0	7,0
	Military	ha	0,0	19,4
	Cemetery	ha	2,7	27,3
Transportation	Airfield runways	ha	14,1	14,8
	Airfield runways	km	0,7	0,7
	Highways	km	54,5	145,2
	Primary Road	km	18,0	112,9
	Secondary Road	km	28,1	280,0
	Local Road	km	297,8	2.223,9
	Long-distance railways	km	5,7	59,0
Facilities	Settling Basin	ha	0,0	2,0
	Dams	ha	0,0	0,0
	Constructions for mining or extraction	ha	5,1	120,7
	Power plant constructions	ha	14,3	68,2
	Sport and recreation constructions	ha	9,1	130,6
	Long-distance pipelines, communication and electricity lines	km	51,5	145,8
	Dams	km	0,3	0,5
Land use	Arable land	ha	25.555,3	73.395,5
	Pastures	ha	1.445,6	3.137,9
	Other	ha	1.318,3	8.346,6
	Heterogeneous agricultural areas	ha	357,5	9.914,2
	Inland wetlands	ha	150,3	172,9
	Shrub and/or herbaceous vegetation association	ha	77,9	24.751,7
	Forests	ha	67,4	11.190,0
	Permanent crops	ha	11,4	1.216,3
	Open spaces with little or no vegetation	ha	0,0	51,3

Disclaimer:

Full disclaimer and other helpful information available in the online manual:
<https://emergency.copernicus.eu/mapping/ems/online-manual-rapid-mapping-products>
 © European Union / Copernicus Emergency Management Service

Data access:

All data displayed on the map(s), as well as Land Use - Land Cover layer(s), are available in the Crisis Information Package and the Base Layer Package (for reference data). The table above is available in editable format in the Crisis Information Package. All products and data are also available for download on the portal.

Access to the portal



PROGRAMME OF THE EUROPEAN UNION

