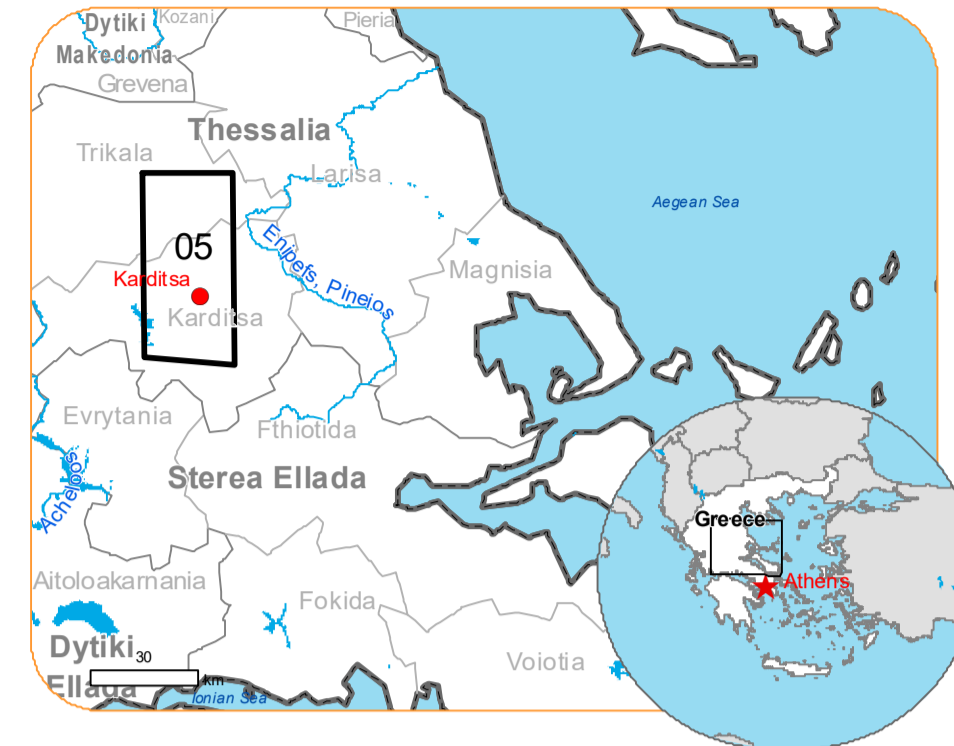


EMSR692 - AOI05  
Flood in Greece  
KARDITSA

Situation as of 18/09/2023 10:08 UTC  
Delineation MONIT05 - Overview map 01



Previous flooded area 3,314.6 ha  
Flooded area 1,891.0 ha  
Flood trace 17,531.6 ha  
Potentially affected population ~ 5900

Potentially Affected Built-up and Transportations

Railway 3.1 km  
Road 274.3 km  
Built-Up 463.8 ha

- Crisis Information**
- Flooded Area
  - Flood trace
  - Previous Flooded Area (17/09/2023 09:05 UTC)
- General Information**
- Area of Interest
  - Image Footprint
  - Not Analysed
- Administrative boundaries**
- Municipality
  - Placename
- Built-Up Area**
- Residential
  - Non residential
- Facilities**
- School, university and research buildings
  - Hospital or institutional care buildings
  - Military
  - Sport and recreation constructions
  - Water or Aquatic infrastructure
  - Dam
  - Transportation
    - Highway
    - Main road
    - Local road
    - Railway
    - Airfield runway
    - Airfield
  - Hydrography
    - River
    - Stream
    - Lake
    - Land Subject to Inundation
    - Reservoir
  - Facilities
    - Long-distance pipelines or lines
    - Dam
    - Mining or extraction site
    - Power plant

**Event:**  
Due to extreme rainfall in Thessaly Region, extended floods occurred in Magnesia Regional Unit, mostly around the city of Volos and coastal areas of Pelion mountain peninsula. Extreme rainfall is ongoing and according to the forecast of the National Meteorological Service the rainfall will continue until tomorrow afternoon. One person is missing, and one died, and many cars were drifted away due to the flooding. Local Fire Service received many calls for help to pump water from flooded buildings and rescue people trapped by the rising waters. Copernicus EMS Rapid Mapping is requested to provide initial rough estimation, flood extent and monitoring of the event for the emergency mapping.

**Data sources and analysis:** Pre-event image: Sentinel-2A/B (2023) (acquired on 31/08/2023 at 09:15 UTC, resolution 10.0 m).  
Post-event image: WorldView-2 @ Maxar Technologies, Inc. (2023), (acquired on 18/09/2023 at 10:08 UTC, resolution 2.0 m). This image is used as background image.  
SPOT6/7 @ Airbus DS (2023) (acquired on 17/09/2023 at 09:05 UTC, resolution 1.5 m).

All images are provided under COPERNICUS by the European Union and ESA, all rights reserved.

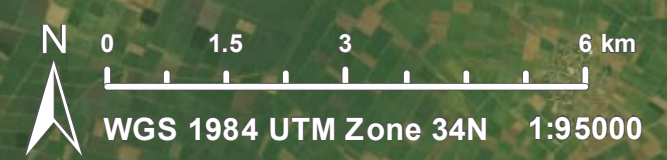
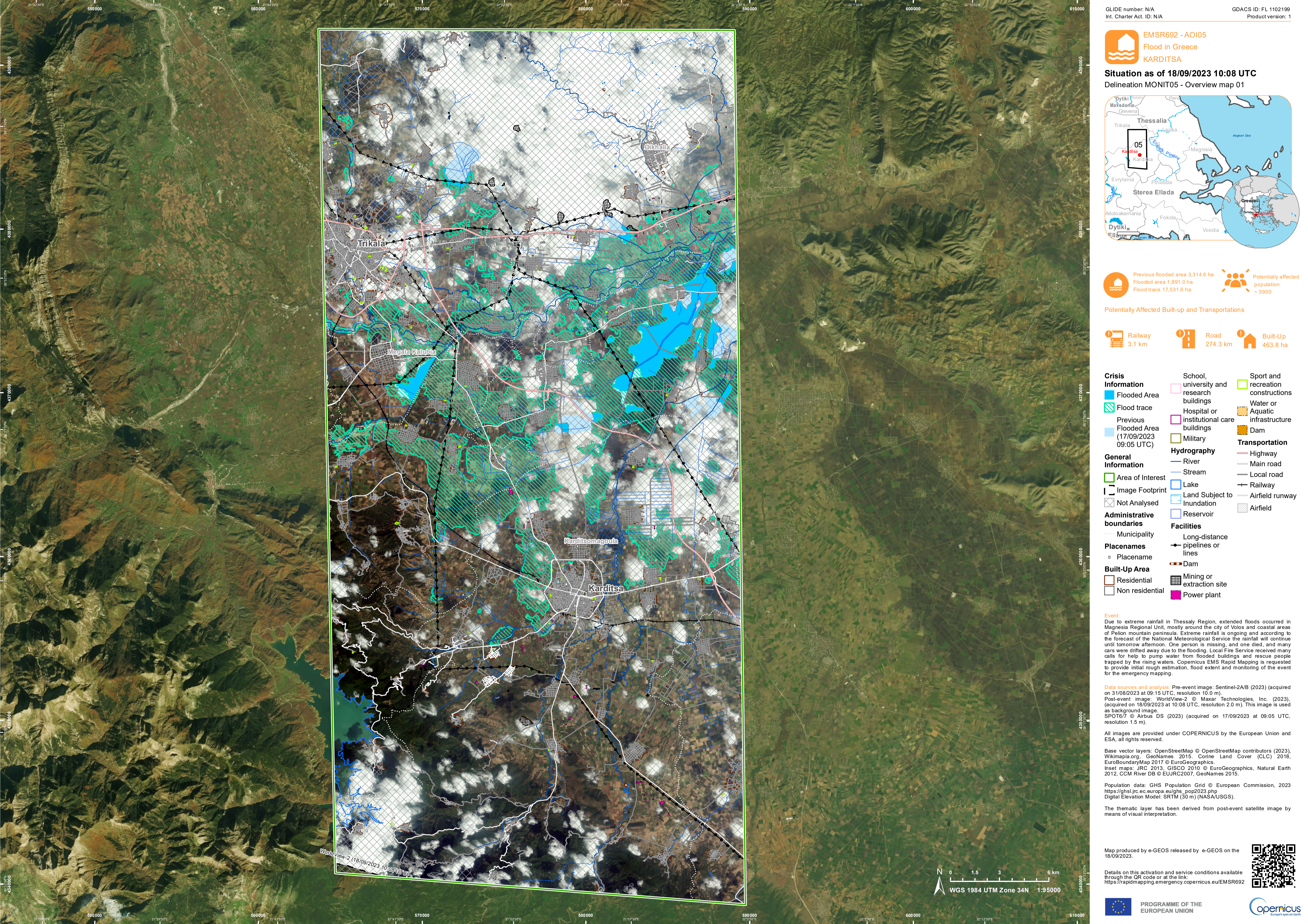
Base vector layers: OpenStreetMap @ OpenStreetMap contributors (2023), Wikimapia.org, GeoNames 2015, Corine Land Cover (CLC) 2018, EuroBoundaryMap 2017 @ EuroGeographics.  
Inset maps: JRC 2013, GISCO 2010 @ EuroGeographics, Natural Earth 2012, CCM River DB @ EUJRC2007, GeoNames 2015.

Population data: GHS Population Grid @ European Commission, 2023  
[https://ghsl.jrc.ec.europa.eu/ghs\\_pop2023.php](https://ghsl.jrc.ec.europa.eu/ghs_pop2023.php)  
Digital Elevation Model: SRTM (30 m) (NASA/USGS).

The thematic layer has been derived from post-event satellite image by means of visual interpretation.

Map produced by e-GEOS released by e-GEOS on the 18/09/2023.

Details on this activation and service conditions available through the QR code or at the link: <https://rapidmapping.emergency.copernicus.eu/EMSR692>



WorldView-2 (18/09/2023 10:08 UTC)

Consequences within the AOI				
		Unit of measurement	Affected	Total in AOI
Flooded area		ha		1,891.0
Previous flooded area		ha		3,314.6
Flood trace		ha		17,531.6
Estimated population		Number of inhabitants	~ 5,900	~ 140,000
Built-up	Residential Buildings	ha	447.2	6,220.8
	Office buildings	ha	0.4	17.2
	Wholesale and retail trade buildings	ha	0.0	14.1
	Industrial buildings	ha	13.1	271.3
	School, university and research buildings	ha	1.0	57.9
	Hospital or institutional care buildings	ha	0.0	7.0
	Military	ha	0.0	19.4
	Cemetery	ha	2.1	27.3
Transportation	Airfield runways	ha	0.0	14.8
	Airfield runways	km	0.0	0.7
	Highways	km	14.1	145.2
	Primary Road	km	16.9	112.9
	Secondary Road	km	21.8	280.0
	Local Road	km	221.4	2,223.9
	Long-distance railways	km	3.1	59.0
Facilities	Settling Basin	ha	0.0	2.0
	Dams	ha	0.0	0.0
	Constructions for mining or extraction	ha	3.3	120.7
	Power plant constructions	ha	11.2	68.2
	Sport and recreation constructions	ha	7.2	130.6
	Long-distance pipelines, communication and electricity lines	km	31.2	145.8
	Dams	km	0.2	0.5
Land use	Arable land	ha	16,823.5	73,395.5
	Other	ha	1,028.4	8,346.6
	Pastures	ha	983.5	3,137.9
	Heterogeneous agricultural areas	ha	364.3	9,914.2
	Inland wetlands	ha	128.0	172.9
	Forests	ha	65.1	11,190.0
	Shrub and/or herbaceous vegetation association	ha	20.3	24,751.7
	Permanent crops	ha	6.3	1,216.3
	Open spaces with little or no vegetation	ha	0.0	51.3

**Disclaimer:**

Full disclaimer and other helpful information available in the online manual:  
<https://emergency.copernicus.eu/mapping/ems/online-manual-rapid-mapping-products>  
 © European Union / Copernicus Emergency Management Service

**Data access:**

All data displayed on the map(s), as well as Land Use - Land Cover layer(s), are available in the Crisis Information Package and the Base Layer Package (for reference data). The table above is available in editable format in the Crisis Information Package. All products and data are also available for download on the portal.

Access to the portal



PROGRAMME OF THE EUROPEAN UNION

