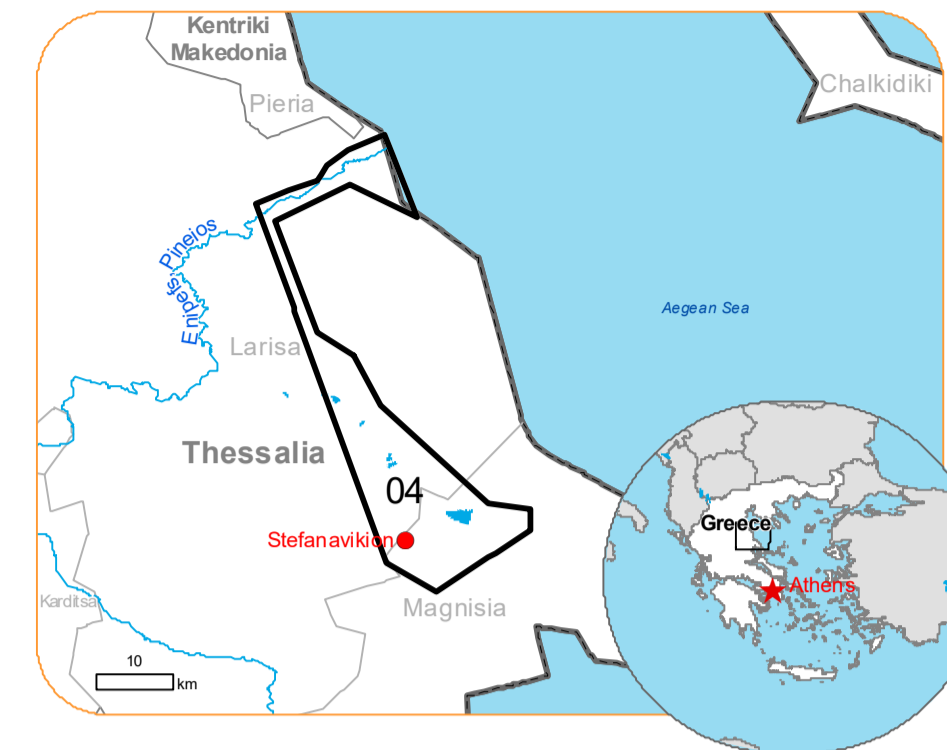




Situation as of 17/09/2023 09:04 UTC
Delineation MONIT03 - Overview map 01



Flooded area 12,349.1 ha
Previous flooded area 13,446.7 ha
Flood trace 2,812.3 ha
Potentially affected population ~ 700

Potentially Affected Built-up and Transportations

Road 364.5 km
Airport 8.7 km
176.2 ha
Railway 0.9 km
Built-Up 176.6 ha

Crisis Information		Hydrography	
Flooded Area	River	Stream	Lake
Flood trace	Land Subject to Inundation	Open Water	Reservoir
Previous Flooded Area (14/09/2023 08:38 UTC)	River	Long-distance pipelines or lines	Local pipelines or lines
Area of Interest	Dam	Mining or extraction site	Power plant
Not Analysed	Dam	Sport and recreation constructions	Water or Aquatic infrastructure
Region	Dam	Dam	Dam
Municipality	Dam	Dam	Dam
Placename	Dam	Dam	Dam
Residential	Dam	Dam	Dam
Non residential	Dam	Dam	Dam
Military	Dam	Dam	Dam
Residential	Dam	Dam	Dam
Non residential	Dam	Dam	Dam
Reservoirs, silos and warehouses	Dam	Dam	Dam
School, university and research buildings	Dam	Dam	Dam
Unclassified	Dam	Dam	Dam
	Highway	Main road	Local road
	Track	Railway	Airfield runway
	Airfield runway	Airfield	

Event:
Due to extreme rainfall in Thessaly Region, extended floods occurred in Magnesia Regional Unit, mostly around the city of Volos and coastal areas of Pelion mountain peninsula. Extreme rainfall is ongoing and according to the forecast of the National Meteorological Service the rainfall will continue until tomorrow afternoon. One person is missing, and one died, and many cars were drifted away due to the flooding. Local Fire Service received many calls for help to pump water from flooded buildings and rescue people trapped by the rising waters. Copemicus EMS Rapid Mapping is requested to provide initial rough estimation, flood extent and monitoring of the event for the emergency mapping.

Data sources and analysis: Pre-event image: Sentinel-2A/B (2023) (acquired on 31/08/2023 at 09:15 UTC, resolution 10.0 m).
Post-event image: SPOT6 @ Airbus DS (2023), (acquired on 17/09/2023 at 09:04 UTC, resolution 1.5 m). This image is used as background image.
SPOT6 @ Airbus DS (2023), (acquired on 14/09/2023 at 08:38 UTC, resolution 1.5 m).
All images are provided under COPERNICUS by the European Union and ESA, all rights reserved.

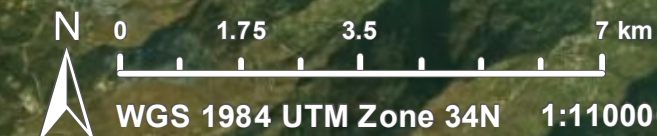
Base vector layers: OpenStreetMap © OpenStreetMap contributors (current year), Wikimapia.org, GeoNames 2015, Corine Land Cover (CLC) 2018, EuroBoundaryMap 2017 © EuroGeographics.
Inset maps: JRC 2013, GISCO 2010 © EuroGeographics, Natural Earth 2012, CCM River DB © EUJRC2007, GeoNames 2015.

Population data: GHS Population Grid © European Commission, 2023
https://ghsl.jrc.ec.europa.eu/ghs_pop2023.php

The thematic layer has been derived from post-event satellite image by means of visual interpretation.

Map produced by GAF AG released by e-GEOS on the 17/09/2023.

Details on this activation and service conditions available through the QR code or at the link:
<https://rapidmapping.emergency.copernicus.eu/EMSR692>



Consequences within the AOI				
		Unit of measurement	Affected	Total in AOI
Flooded area		ha		12,349.1
Flood trace		ha		2,812.3
Previous flooded area		ha		13,446.7
Estimated population		Number of inhabitants	~ 700	~ 12,000
Built-up	Residential Buildings	ha	0.3	1,127.1
	Office buildings	ha	0.0	1.0
	Industrial buildings	ha	0.0	17.9
	Military	ha	176.2	176.2
	Cemetery	ha	0.0	1.3
	Hotel buildings	ha	0.0	1
	Communication buildings, stations, terminals and associated buildings	ha	0.0	1
	Unclassified	ha	0.0	79
Transportation	Airfield runways	ha	176.2	176.2
	Airfield runways	km	8.7	8.7
	Highways	km	1.9	26.8
	Primary Road	km	0.5	30.4
	Secondary Road	km	8.9	104.7
	Local Road	km	38.8	407.9
	Cart Track	km	314.3	833.7
	Long-distance railways	km	0.9	52.2
Facilities	Long-distance pipelines, communication and electricity lines	km	1.5	15.5
	Local pipelines and cables	km	0.0	0.0
	Dams	km	0.0	8.0
Land use	Arable land	ha	13,407.5	25,405.1
	Other	ha	570.8	7,318.7
	Pastures	ha	372.3	509.9
	Coastal wetlands	ha	259.5	563.8
	Inland wetlands	ha	190.2	247.7
	Heterogeneous agricultural areas	ha	130.3	2,407.3
	Forests	ha	118.0	446.2
	Permanent crops	ha	62.0	2,046.7
	Shrub and/or herbaceous vegetation association	ha	44.8	9,902.4
	Open spaces with little or no vegetation	ha	6.1	90.4

Disclaimer:

Full disclaimer and other helpful information available in the online manual:
<https://emergency.copernicus.eu/mapping/ems/online-manual-rapid-mapping-products>
 © European Union / Copernicus Emergency Management Service

Data access:

All data displayed on the map(s), as well as Land Use - Land Cover layer(s), are available in the Crisis Information Package and the Base Layer Package (for reference data). The table above is available in editable format in the Crisis Information Package. All products and data are also available for download on the portal.

Access to the portal



PROGRAMME OF THE EUROPEAN UNION

