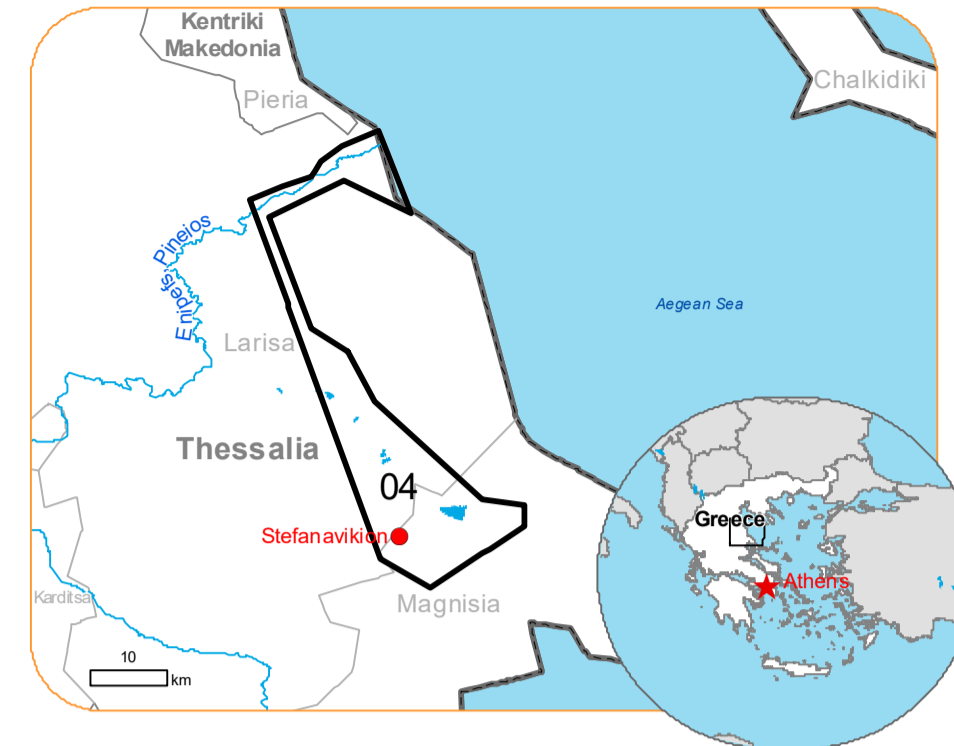




**Situation as of 12/09/2023 08:53 UTC**  
Delineation MONIT01 - Overview map 01



Flooded area 15,088.2 ha  
Flood trace 949.9 ha  
Previous flooded area 15,691.0 ha

Potentially affected population ~ 900

Potentially Affected Built-up and Transportations

- Built-Up 239.7 ha
- Road 420.1 km
- Airport 8.7 km / 176.2 ha
- Railway 9.8 km

**Crisis Information**

- Flooded Area
- Previous Flooded Area (10/09/2023 10:09 UTC)
- Flood trace
- Area of Interest

**General Information**

- Region
- Municipality
- Placename
- Placename

**Administrative boundaries**

- Region
- Municipality

**Placenames**

- Placename

**Built-Up Area**

- Residential
- Non residential
- Military
- Residential
- Non residential
- Reservoirs, silos and warehouses
- School, university and research buildings
- Unclassified

**Hydrography**

- River
- Stream
- Lake
- Land Subject to Inundation
- Open Water
- Reservoir
- River

**Facilities**

- Long-distance pipelines or lines
- Local pipelines or lines
- Dam
- Mining or extraction site
- Power plant
- Sport and recreation constructions
- Water or Aquatic infrastructure
- Dam

**Transportation**

- Highway
- Main road
- Local road
- Track
- Railway
- Airfield runway
- Airfield

**Event:**  
Due to extreme rainfall in Thessaly Region, extended floods occurred in Magnesia Regional Unit, mostly around the city of Volos and coastal areas of Pelion mountain peninsula. Extreme rainfall is ongoing and according to the forecast of the National Meteorological Service the rainfall will continue until tomorrow afternoon. One person is missing, and one died, and many cars were drifted away due to the flooding. Local Fire Service received many calls for help to pump water from flooded buildings and rescue people trapped by the rising waters. Copemicus EMS Rapid Mapping is requested to provide initial rough estimation, flood extent and monitoring of the event for the emergency mapping.

**Data sources and analysis:** Pre-event image: Sentinel-2A/B (2023) (acquired on 31/08/2023 at 09:15 UTC, resolution 10.0 m).  
Post-event image: SPOT6 @ Airbus DS (2023), (acquired on 12/09/2023 at 08:53 UTC, resolution 1.5 m). This image is used as background image.  
GeoEye @ Maxar Technologies, Inc. (2023), (acquired on 10/09/2023 at 10:09 UTC, resolution 2.0 m).  
All images are provided under COPERNICUS by the European Union and ESA, all rights reserved.

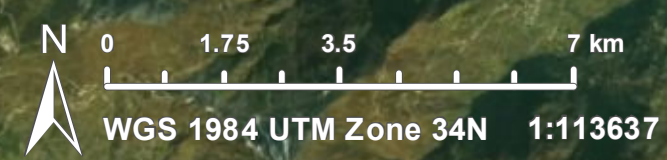
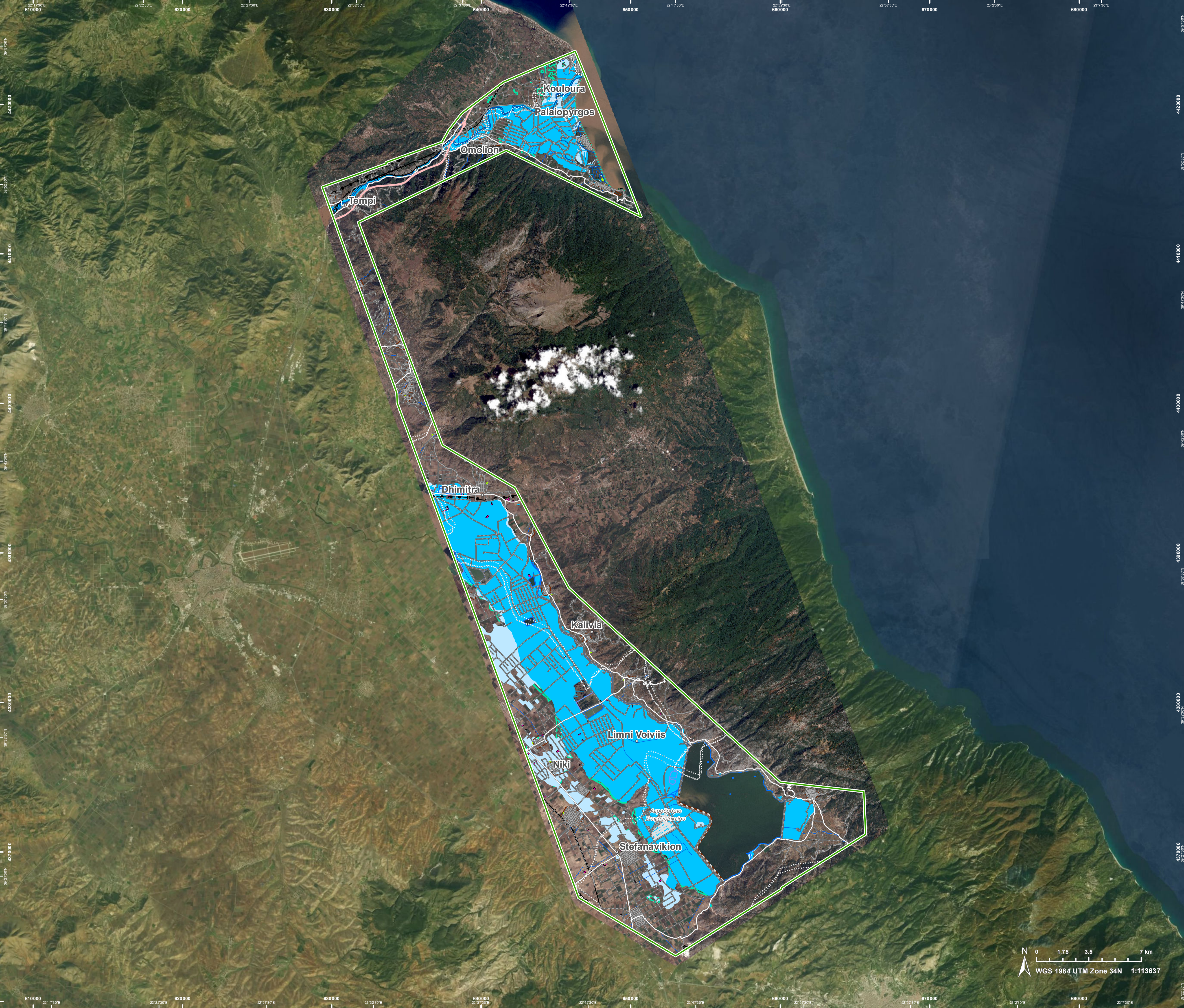
Base vector layers: OpenStreetMap © OpenStreetMap contributors (current year), Wikimapia.org, GeoNames 2015, Corine Land Cover (CLC) 2018, EuroBoundaryMap 2017 © EuroGeographics.  
Inset maps: JRC 2013, GISCO 2010 © EuroGeographics, Natural Earth 2012, CCM River DB © EUJRC2007, GeoNames 2015.

Population data: GHS Population Grid © European Commission, 2023  
[https://ghsl.jrc.ec.europa.eu/ghs\\_pop2023.php](https://ghsl.jrc.ec.europa.eu/ghs_pop2023.php)

The thematic layer has been derived from post-event satellite image using a semi-automatic approach AND by means of visual interpretation.

Map produced by GAF AG released by SERTIT on the 13/09/2023.

Details on this activation and service conditions available through the QR code or at the link:  
<https://rapidmapping.emergency.copernicus.eu/EMSR692>



Consequences within the AOI				
		Unit of measurement	Affected	Total in AOI
Flooded area		ha		15,088.2
Flood trace		ha		949.9
Previous flooded area		ha		15,691.0
Estimated population		Number of inhabitants	~ 900	~ 12,000
Built-up	Residential Buildings	ha	57.4	1,127.1
	Office buildings	ha	0.0	1.0
	Industrial buildings	ha	0.0	17.9
	Military	ha	176.2	176.2
	Cemetery	ha	0.0	1.3
	Hotel buildings	ha	0.0	1
	Communication buildings, stations, terminals and associated buildings	ha	0.0	1
	Unclassified	ha	6	79
Transportation	Airfield runways	ha	176.2	176.2
	Airfield runways	km	8.7	8.7
	Highways	km	0.0	26.8
	Primary Road	km	3.6	30.4
	Secondary Road	km	13.5	104.7
	Local Road	km	51.8	407.9
	Cart Track	km	351.2	833.7
Facilities	Long-distance pipelines, communication and electricity lines	km	2.5	15.5
	Local pipelines and cables	km	0.0	0.0
	Dams	km	0.0	8.0
Land use	Arable land	ha	14,028.7	25,405.1
	Other	ha	810.6	7,318.7
	Pastures	ha	390.2	509.9
	Coastal wetlands	ha	261.5	563.8
	Inland wetlands	ha	233.3	247.7
	Heterogeneous agricultural areas	ha	157.8	2,407.3
	Permanent crops	ha	67.9	2,046.7
	Shrub and/or herbaceous vegetation association	ha	64.5	9,902.4
	Forests	ha	17.5	446.2
	Open spaces with little or no vegetation	ha	6.1	90.4

**Disclaimer:**

Full disclaimer and other helpful information available in the online manual:

<https://emergency.copernicus.eu/mapping/ems/online-manual-rapid-mapping-products>

© European Union / Copernicus Emergency Management Service

**Data access:**

All data displayed on the map(s), as well as Land Use - Land Cover layer(s), are available in the Crisis Information Package and the Base Layer Package (for reference data).

The table above is available in editable format in the Crisis Information Package.

All products and data are also available for download on the portal.

Access to  
the portal



PROGRAMME OF THE  
EUROPEAN UNION

