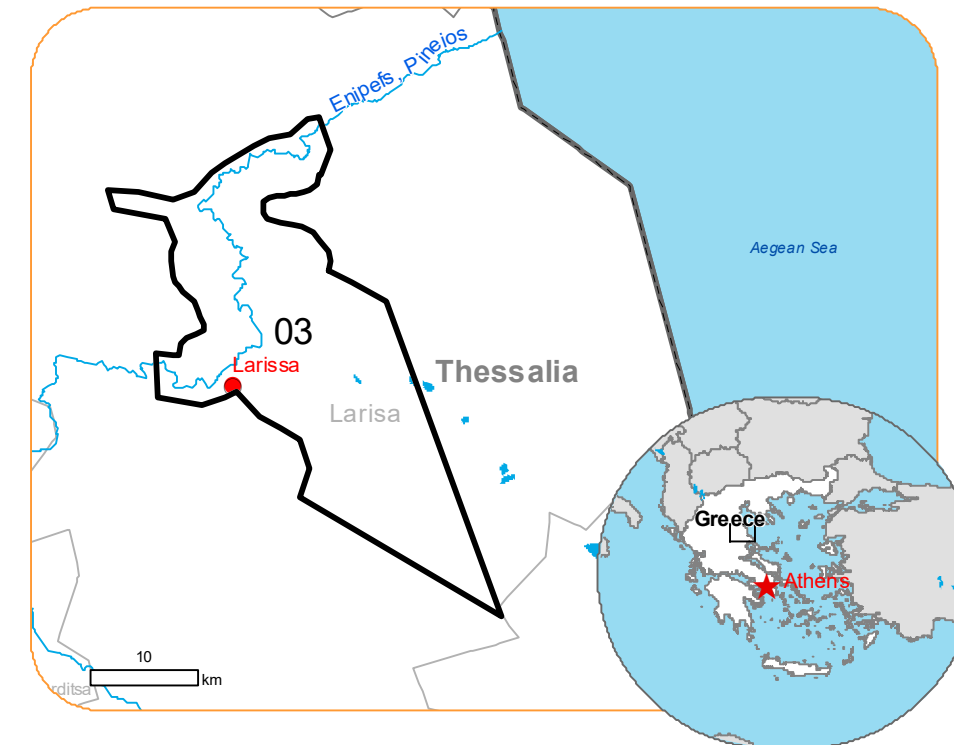




Situation as of 15/09/2023 09:19 UTC
 Delineation MONIT03 - Overview map 01



Flooded area 7,244.2 ha
Flood trace 7,331.7 ha
 Previous flooded area 10,380.9 ha

Potentially affected population ~ 14000

Potentially Affected Built-up, Transportations and Facilities

Built-Up 305.7 ha
Road 282.3 km
Railway 20.8 km
Airport 1.1 km
 4.1 ha
Facilities 42.5 km
 100.5 ha

Crisis Information	Hydrography	Transportation
Flooded Area	River	Highway
Flood trace	Stream	Main road
Previous Flooded Area (14/09/2023 08:38 UTC)	Waterfall	Local road
	Lake	Railway
	Reservoir	Airfield runway

General Information	Facilities
Area of Interest	Long-distance pipelines or lines
Image Footprint	Local pipelines or lines
Not Analysed	Dam

Administrative boundaries	Administrative boundaries
Municipality	Mining or extraction site

Placenames	Administrative boundaries
Placename	Power plant

Built-Up Area	Facilities
Residential	Sport and recreation constructions
Non residential	Dump Site
School, university and research buildings	Water or Aquatic infrastructure
Hospital or institutional care buildings	Dam
Military	

Event:
 Due to extreme rainfall in Thessaly Region, extended floods occurred in Magnesia Regional Unit, mostly around the city of Volos and coastal areas of Pelion mountain peninsula. Extreme rainfall is ongoing and according to the forecast of the National Meteorological Service the rainfall will continue until tomorrow afternoon. One person is missing, and one died, and many cars were drifted away due to the flooding. Local Fire Service received many calls for help to pump water from flooded buildings and rescue people trapped by the rising waters. Copernicus EMS Rapid Mapping is requested to provide initial rough estimation, flood extent and monitoring of the event for the emergency mapping.

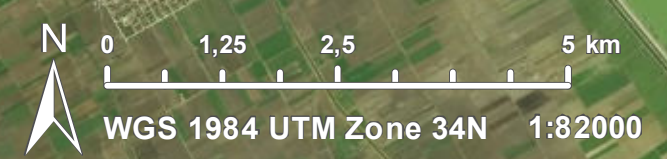
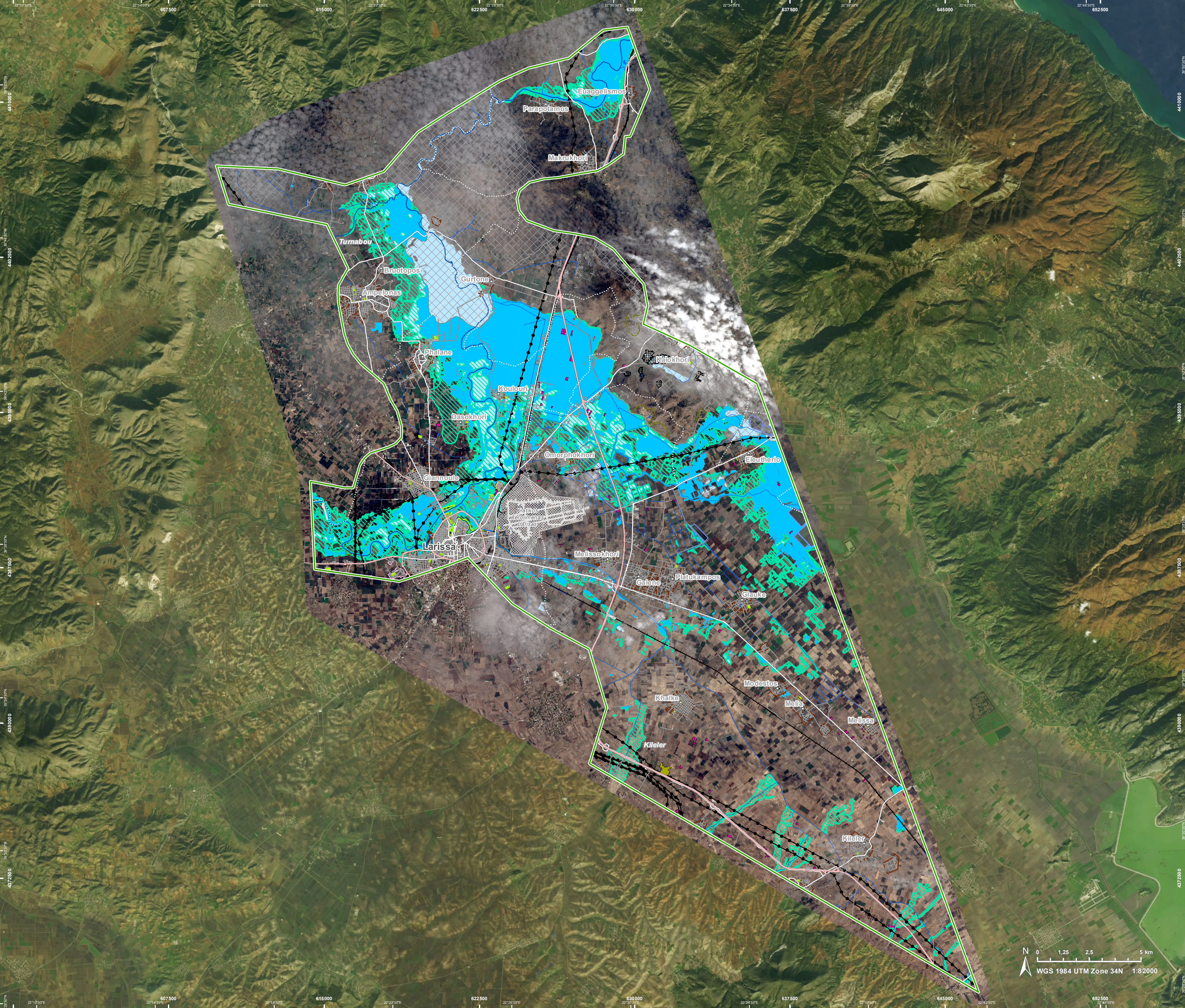
Data sources and analysis: Pre-event image: Sentinel-2A/B (2023) (acquired on 31/08/2023 at 09:15 UTC, resolution 10.0 m).
 Post-event image: SPOT6/7 @ Airbus DS (2023), (acquired on 15/09/2023 at 09:19 UTC, resolution 1.5 m). This image is used as background image.
 SPOT6/7 @ Airbus DS (2023), (acquired on 14/09/2023 at 08:38 UTC, resolution 1.5 m, resolution 1.5 m).

All images are provided under COPERNICUS by the European Union and ESA, all rights reserved.

Base vector layers: OpenStreetMap © OpenStreetMap contributors (2023), Wikimapia.org, GeoNames 2015, Corine Land Cover (CLC) 2018, EuroBoundaryMap 2017 © EuroGeographics.
 Inset maps: JRC 2013, GISCO 2010 © EuroGeographics, Natural Earth 2012, CCM River DB © EUJRC2007, GeoNames 2015.
 Population data: GHS Population Grid © European Commission, 2023 https://ghsl.jrc.ec.europa.eu/ghs_pop2023.php

The thematic layer has been derived from post-event satellite image by means of photo-interpretation.

Map produced by CLS released by e-GEOS on the 15/09/2023.
 Details on this activation and service conditions available through the QR code or at the link: <https://rapidmapping.emergency.copernicus.eu/EMSR692>



Consequences within the AOI				
		Unit of measurement	Affected	Total in AOI
Flooded area		ha		7 244,2
Flood trace		ha		7 331,7
Previous flooded area		ha		10 380,9
Estimated population	Number of inhabitants		~ 14 000	~ 120 000
Built-up	Residential Buildings	ha	188,7	2 609,0
	Office buildings	ha	23,0	51,7
	Wholesale and retail trade buildings	ha	0,0	1,8
	Industrial buildings	ha	85,9	451,1
	School, university and research buildings	ha	0,4	55,1
	Hospital or institutional care buildings	ha	0,0	1,4
	Military	ha	7,3	1 091,1
	Cemetery	ha	0,4	5,0
Transportation	Airfield runways	ha	4,1	873,1
	Helipad	ha	0,0	0,2
	Airfield runways	km	1,1	28,3
	Highways	km	38,9	139,4
	Primary Road	km	11,3	81,4
	Secondary Road	km	24,2	135,0
	Local Road	km	207,9	1 070,5
	Long-distance railways	km	20,8	95,4
Facilities	Settling Basin	ha	11,7	11,8
	Dams	ha	0,0	0,3
	Constructions for mining or extraction	ha	0,6	79,8
	Power plant constructions	ha	30,9	85,7
	Sport and recreation constructions	ha	57,2	116,7
	Other civil engineering works not elsewhere classified	ha	0,0	18,2
	Long-distance pipelines, communication and electricity lines	km	42,4	134,7
	Local pipelines and cables	km	0,0	0,1
Dams	kms	0,1	0,3	
Land use	Arable land	ha	12 215,5	42 070,5
	Other	ha	1 393,3	6 627,0
	Heterogeneous agricultural areas	ha	582,3	3 727,6
	Open spaces with little or no vegetation	ha	118,3	236,1
	Pastures	ha	106,9	717,8
	Inland wetlands	ha	89,0	191,4
	Shrub and/or herbaceous vegetation association	ha	55,6	6 130,4
	Permanent crops	ha	15,1	774,4

Disclaimer:

Full disclaimer and other helpful information available in the online manual:
<https://emergency.copernicus.eu/mapping/ems/online-manual-rapid-mapping-products>
 © European Union / Copernicus Emergency Management Service

Data access:

All data displayed on the map(s), as well as Land Use - Land Cover layer(s), are available in the Crisis Information Package and the Base Layer Package (for reference data). The table above is available in editable format in the Crisis Information Package. All products and data are also available for download on the portal.

Access to the portal



PROGRAMME OF THE EUROPEAN UNION

