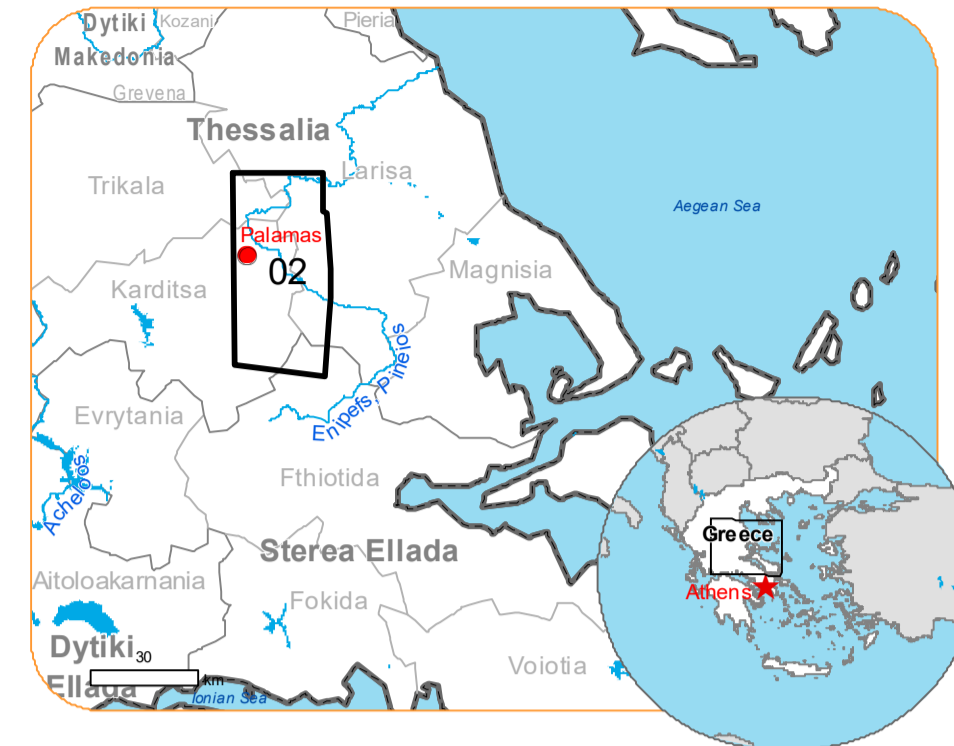


Situation as of 19/09/2023 09:34 UTC
 Delineation MONIT05 - Overview map 01



Flooded area 2,982.1 ha
Flood trace 63,595.5 ha
Previous flooded area 4,988.4 ha

Potentially affected population ~ 13,000

Potentially Affected Built-up and Transportations

Railway 110.6 km
Road 738.7 km
Built-Up 1,753.9 ha

- | | | |
|--|---|--|
| Crisis Information | Built-Up Area | Facilities |
| <ul style="list-style-type: none"> Dike breach Flooded Area Flood trace Previous Flooded Area (17/09/2023 09:05 UTC) | <ul style="list-style-type: none"> Residential Non residential School, university and research buildings Hospital or institutional care buildings | <ul style="list-style-type: none"> Long-distance pipelines or lines Dam Mining or extraction site Power plant Sport and recreation constructions Water or aquatic infrastructure Dam |
| General Information | Hydrography | Transportation |
| <ul style="list-style-type: none"> Area of Interest Not Analysed | <ul style="list-style-type: none"> River Stream Lake Land Subject to Inundation Reservoir | <ul style="list-style-type: none"> Highway Main road Railway |
| Administrative boundaries | | |
| <ul style="list-style-type: none"> Province Municipality | | |
| Placenames | | |
| <ul style="list-style-type: none"> Placename | | |

Event:
 Due to extreme rainfall in Thessaly Region, extended floods occurred in Magnesia Regional Unit, mostly around the city of Volos and coastal areas of Pelion mountain peninsula. Extreme rainfall is ongoing and according to the forecast of the National Meteorological Service the rainfall will continue until tomorrow afternoon. One person is missing, and one died, and many cars were drifted away due to the flooding. Local Fire Service received many calls for help to pump water from flooded buildings and rescue people trapped by the rising waters. Copernicus EMS Rapid Mapping is requested to provide initial rough estimation, flood extent and monitoring of the event for the emergency mapping.

Data sources and analysis: Pre-event image: Sentinel-2A/B (2023) (acquired on 31/08/2023 at 09:15 UTC, resolution 10.0 m).
 Post-event image: WorldView-2 © Maxar Technologies, Inc. (2023), (acquired on 19/09/2023 at 09:34 UTC, resolution 2 m). This image is used as background image.
 SPOT6/7 © Airbus DS (2023), (acquired on 17/09/2023 at 09:05 UTC, resolution 1,5 m)
 All images are provided under COPERNICUS by the European Union and ESA, all rights reserved.

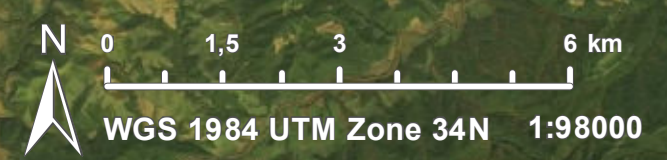
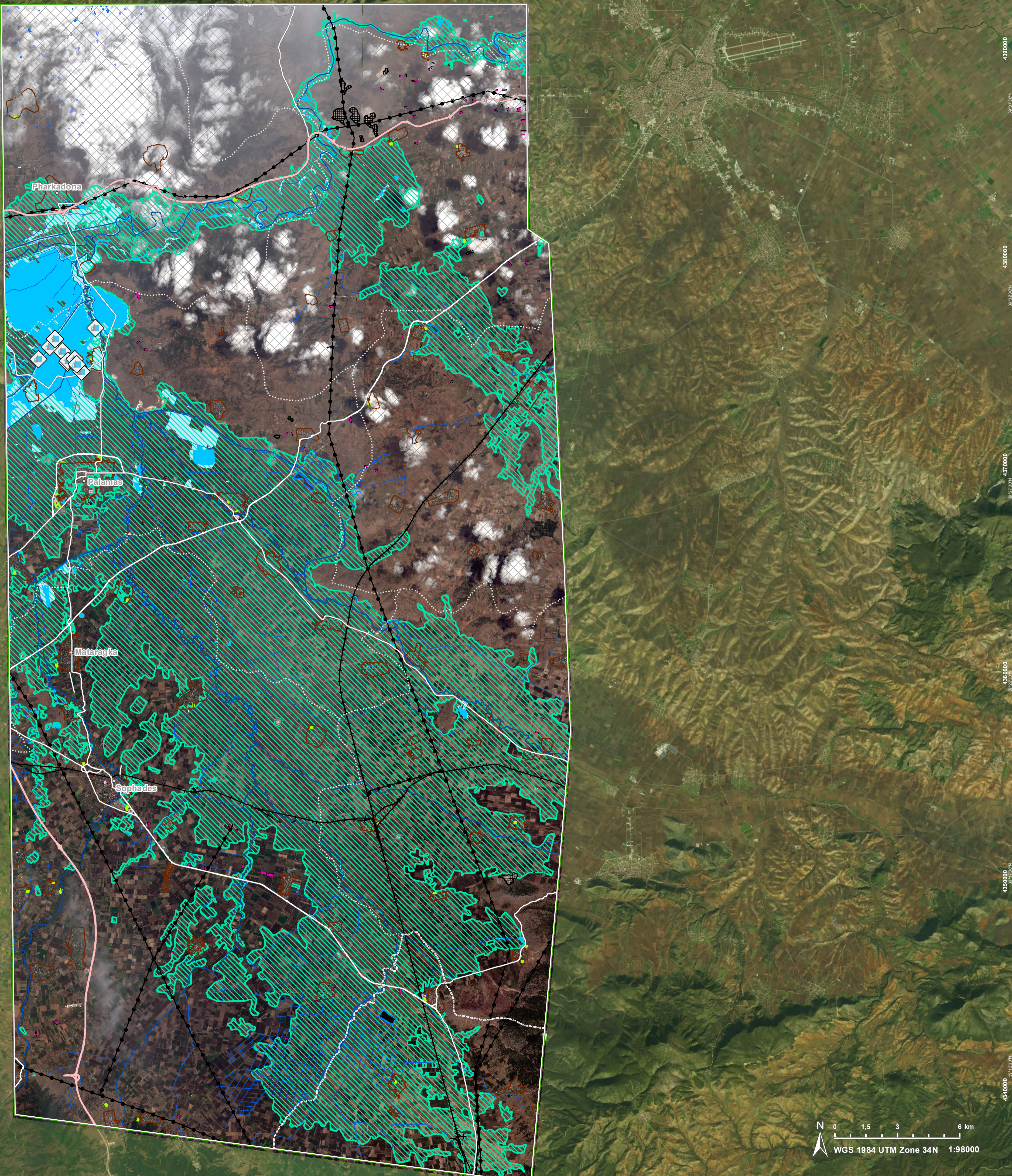
Base vector layers: OpenStreetMap © OpenStreetMap contributors (2023), Wikimapia.org, GeoNames 2015, Corine Land Cover (CLC) 2018, EuroBoundaryMap 2017 © EuroGeographics.
 Inset maps: JRC 2013, GISCO 2010 © EuroGeographics, Natural Earth 2012, CCM River DB © EUJRC2007, GeoNames 2015.

Population data: GHS Population Grid © European Commission, 2023
https://ghsl.jrc.ec.europa.eu/ghs_pop2023.php
 Digital Elevation Model: SRTM (30 m) (NASA/USGS)

The thematic layer has been derived from post-event satellite image by means of visual interpretation.

Map produced by ITHACA released by e-GEOS on the 19/09/2023.

Details on this activation and service conditions available through the QR code or at the link:
<https://rapidmapping.emergency.copernicus.eu/EMSR692>



Consequences within the AOI				
		Unit of measurement	Affected	Total in AOI
Flood trace		ha		63.595,5
Flooded area		ha		2.982,1
Previous flooded area		ha		4.988,4
Dike breach		No.		11
Estimated population		Number of inhabitants	~ 13.000	~ 39.000
Built-up	Residential Buildings	ha	1.692,9	4.335,1
	Office buildings	ha	0	2,6
	Wholesale and retail trade buildings	ha	0	0,6
	Industrial buildings	ha	54,8	89,3
	School, university and research buildings	ha	1,0	10,1
	Hospital or institutional care buildings	ha	0	0,3
	Cemetery	ha	5,2	13,5
Transportation	Highways	km	23,6	102,2
	Primary Road	km	23,3	65,8
	Secondary Road	km	111,2	173,8
	Local Road	km	580,6	1.435,4
	Long-distance railways	km	110,6	144,8
Facilities	Settling Basin	ha	0,9	0,9
	Dams	ha	0,3	0,3
	Constructions for mining or extraction	ha	0,01	146,9
	Power plant constructions	ha	20,3	111,6
	Sport and recreation constructions	ha	12,3	35,3
	Long-distance pipelines, communication and electricity lines	km	46,6	153,8
	Dams	km	0,1	0,1
Land use	Arable land	ha	59.024,0	107.864,0
	Other	ha	2.320,6	4.947,1
	Pastures	ha	1.558,2	2.072,3
	Heterogeneous agricultural areas	ha	305,5	731,8
	Shrub and/or herbaceous vegetation association	ha	245,6	27.565,7
	Inland wetlands	ha	127,1	127,8
	Forests	ha	25,6	378,5
	Permanent crops	ha	13,4	273,6
	Open spaces with little or no vegetation	ha	0,5	112,9

Disclaimer:

Full disclaimer and other helpful information available in the online manual:

<https://emergency.copernicus.eu/mapping/ems/online-manual-rapid-mapping-products>

© European Union / Copernicus Emergency Management Service

Data access:

All data displayed on the map(s), as well as the Physiography and Land Use - Land Cover layers, are available in the Crisis Information Package and the Base Layer Package (for reference data).

The table above is available in editable format in the Crisis Information Package.

All products and data are also available for download on the portal.

Access to
the portal



PROGRAMME OF THE
EUROPEAN UNION

