



EMSR686 - AOI01
Wildfire in Greece
ARISTINO

Situation as of 21/08/2023 09:25 UTC
Delineation MONIT01 - Overview map 01



Active Flames 34 No.
Fire Fronts 7.0 km
Burnt area 8,529.4 ha



Potentially affected
population
~ 600

Potentially Affected Built-up and Transportations



Railway
9.6 km



Road
225.5 km

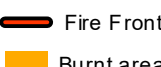


Built-Up
5.2 ha

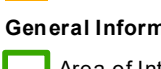
Crisis Information



Active Flames

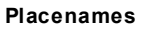


Fire Fronts



Burnt area

General Information

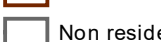


Area of Interest



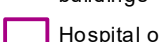
Detail map

Placenames



Placename

Built-Up Area



Residential



Non residential



School, university and research
buildings



Hospital or institutional care buildings

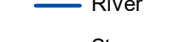


Military

Hydrography



Coastline



River



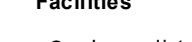
Stream



Lake



Open Water



River

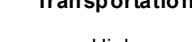
Facilities



Long-distance pipelines or lines



Dam

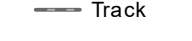


Power plant

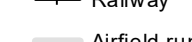


Sport and recreation constructions

Transportation



Highway



Main road



Local road



Railway



Airfield runway



Airfield

	Current		Forecast	
	21 August 09:25 UTC	22 August 09:25 UTC	23 August 09:25 UTC	23 August 09:25 UTC
Wind direction and speed	22 km/h	26 km/h	26 km/h	26 km/h
Temperature and relative humidity	29° 39%	29° 39%	28° 54%	28° 54%

Data retrieved from ECMWF on August 21, 09:25 UTC. Calculated at: 40.888°N, 26.006°E.

Event:

A wildfire that started on Saturday, the 19th of August early in the morning (04:49 local time) in a forest area near Aristino village (East Macedonia and Thrace Region) is ongoing. Residents of the villages Aristino, Loutros, Agnadia, Antheia and Doriko were ordered to evacuate. Copernicus EMS Rapid Mapping is requested to provide fire extent and damage assessment emergency mapping.

Data sources and analysis:

Pre-event image: Sentinel-2A/B (2023) (acquired on 29/07/2023 at 09:05 UTC, resolution 10 m).
Post-event image: WorldView-3 © Maxar Technologies, Inc. (2023), (acquired on 21/08/2023 at 09:25 UTC, resolution 2.0 m). This image was used as background image.
All images are provided under COPERNICUS by the European Union and ESA, all rights reserved.

Base vector layers: OpenStreetMap © OpenStreetMap contributors (2023), Wikimapia.org, GeoNames 2015, Copernicus Land Cover (CLC) 2018, EuroBoundaryMap 2017 © EuroGeographics.

Inset maps: JRC 2013, GISCO 2010 © EuroGeographics, Natural Earth 2012, CCM River DB © EUJRC2007, GeoNames 2015.

Population data: GHS Population Grid © European Commission, 2023
https://ghsl.jrc.ec.europa.eu/ghs_pop2023.php

The thematic layer has been derived from post-event satellite image using a semi-automatic approach and by means of visual interpretation. Due to dense smoke, the burnt area delineation is not complete.

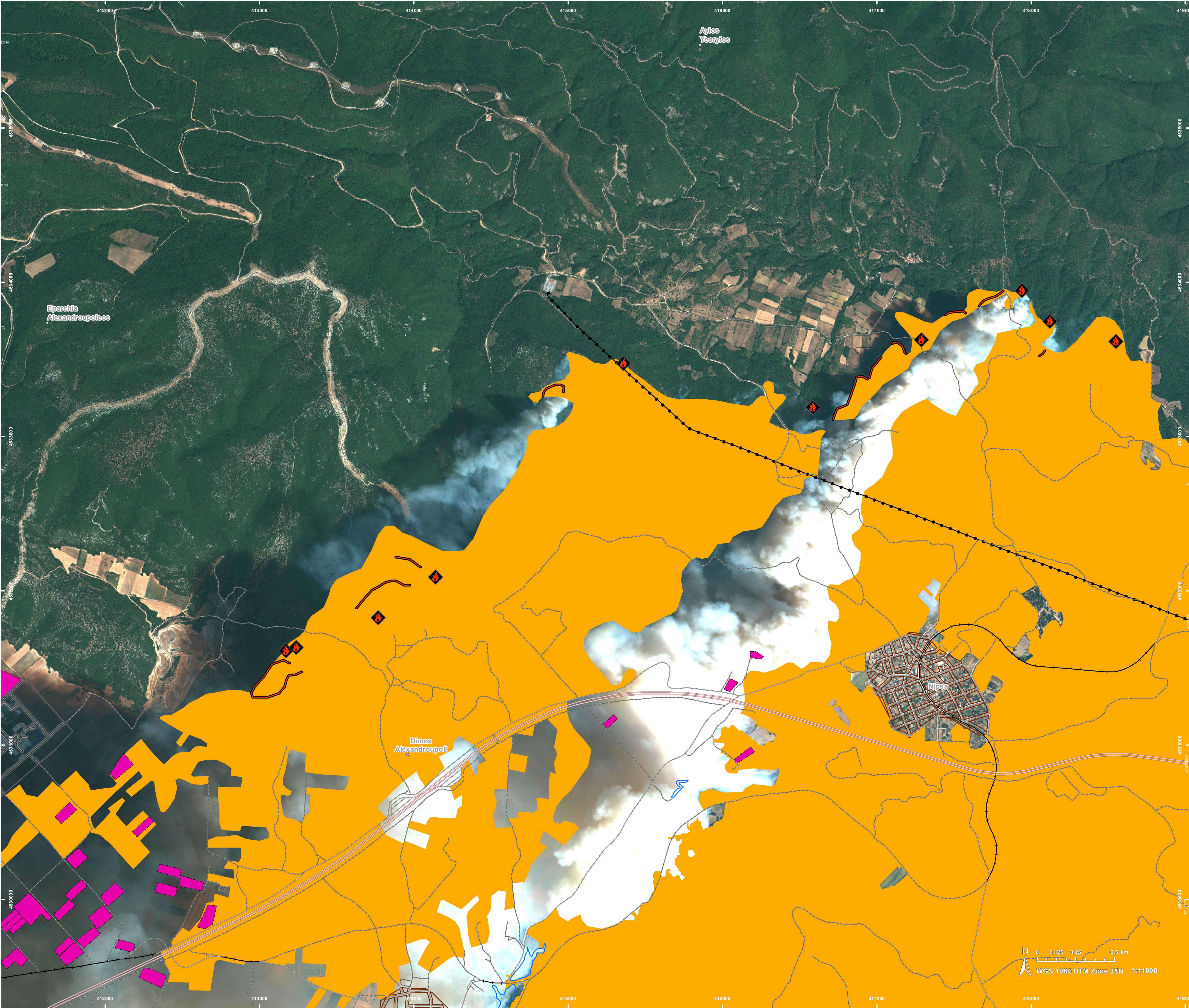
Disclaimer: Full disclaimer and other helpful information available in the online manual:
<https://emergency.copernicus.eu/mapping/ems/online-manual-rapid-mapping-products>.

Map produced by GAF AG released by e-GEOS on the 21/08/2023.
Details on this activation and service conditions available through the QR code or at the link:
<https://rapidmapping.emergency.copernicus.eu/EMSR686/download>

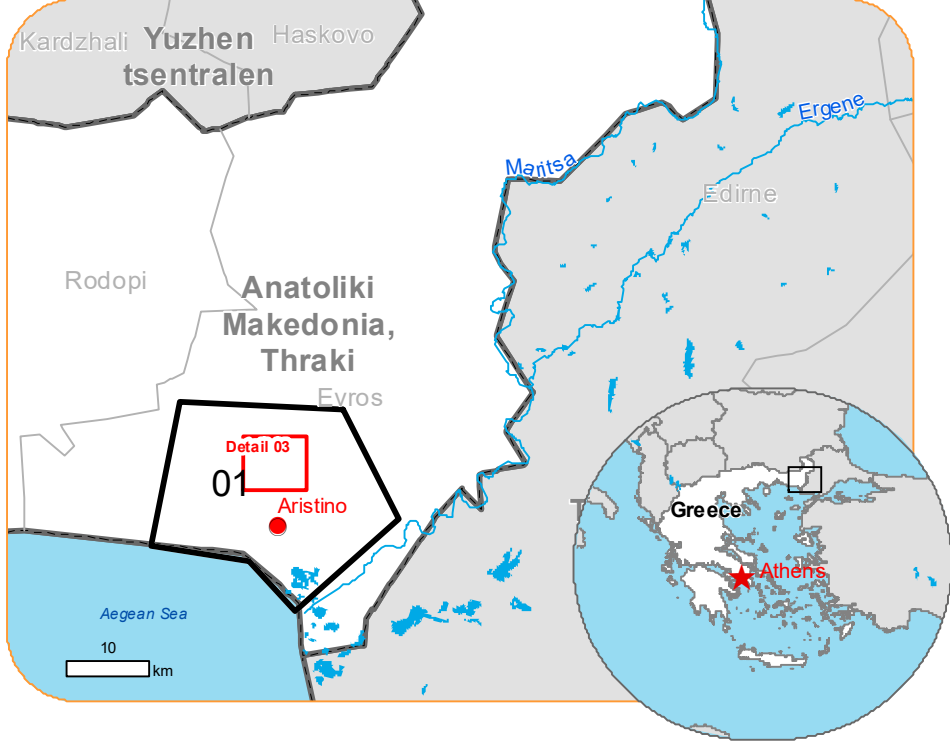


PROGRAMME OF THE
EUROPEAN UNION





Situation as of 21/08/2023 09:25 UTC
Delineation MONIT01 - Detail map 03



Active Flames 10 No.
(29% of total in AOI)
Fire Fronts 2.7 km
(39% of total in AOI)
Burnt area 1,908.8 ha
(22% of total in AOI)

Potentially affected population ~ 550
(92% of total affected)

Potentially Affected Built-up and Transportations

Railway 4.9 km
(51% of total affected)

Road 156.2 km
(69% of total affected)

Built-Up 39.6 ha
(762% of total affected)

Crisis Information

Active Flames

Fire Fronts

Burnt area

Placenames

Placename

Built-Up Area

Residential

Non residential

Hydrography

River

Stream

Lake

Open Water

River

Facilities

Long-distance pipelines or lines

Power plant

Transportation

Highway

Main road

Local road

Track

Railway

Event:
A wildfire that started on Saturday, the 19th of August early in the morning (04:49 local time) in a forest area near Aristino village (East Macedonia and Thrace Region) is ongoing.
Residents of the villages Aristino, Loutros, Agnadia, Antheia and Doriko were ordered to evacuate.
Copernicus EMS Rapid Mapping is requested to provide fire extent and damage assessment emergency mapping.

Data sources and analysis:
Pre-event image: Sentinel-2A/B (2023) (acquired on 29/07/2023 at 09:05 UTC, resolution 10 m).
Post-event image: WorldView-3 © Maxar Technologies, Inc. (2023), (acquired on 21/08/2023 at 09:25 UTC, resolution 2.0 m). This image was used as background image.
All images are provided under COPERNICUS by the European Union and ESA, all rights reserved.

Base vector layers: OpenStreetMap © OpenStreetMap contributors (2023), Wikimapia.org, GeoNames 2015, Corine Land Cover (CLC) 2018, EuroBoundaryMap 2017 © EuroGeographics.

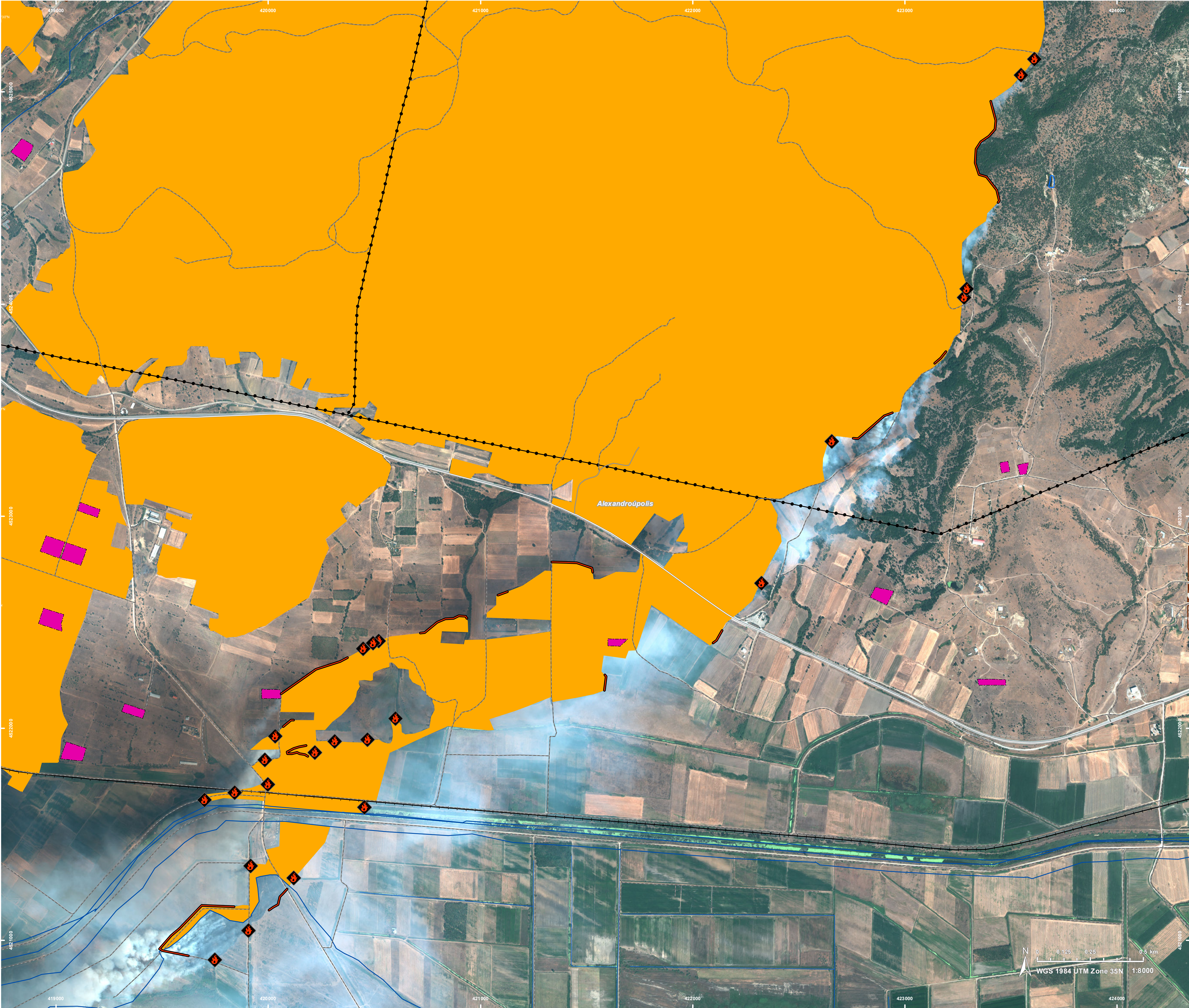
Inset maps: JRC 2013, GISCO 2010 © EuroGeographics, Natural Earth 2012, CCM River DB © EUJRC2007, GeoNames 2015.

Population data: GHS Population Grid © European Commission, 2023
https://ghsl.jrc.ec.europa.eu/ghs_pop2023.php

The thematic layer has been derived from post-event satellite image using a semi-automatic approach and by means of visual interpretation. Due to dense smoke, the burnt area delineation is not complete.

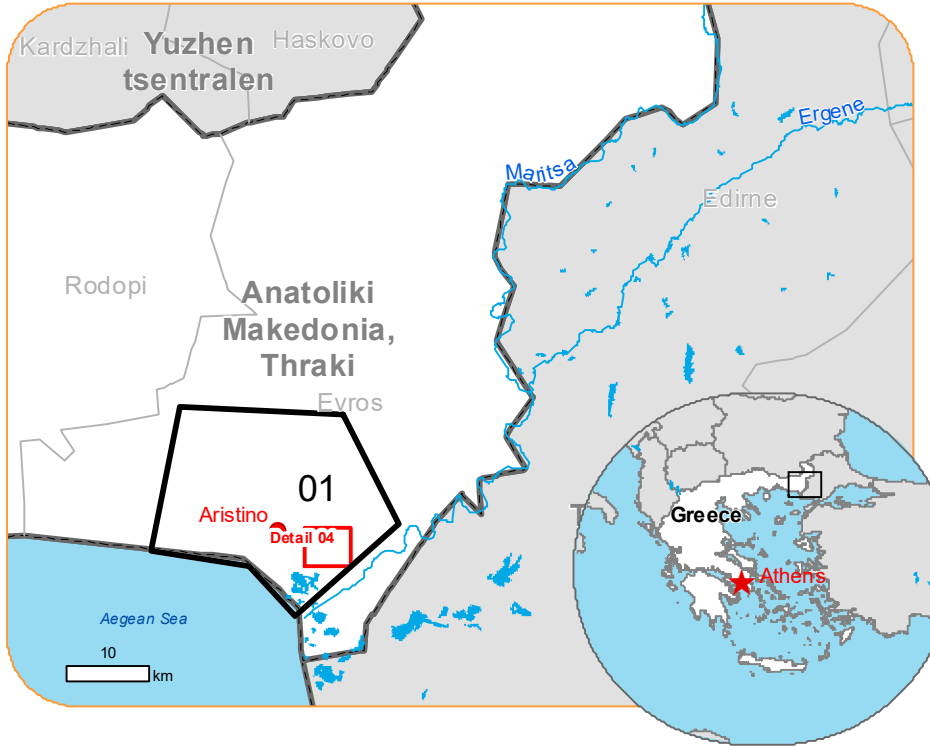
Disclaimer: Full disclaimer and other helpful information available in the online manual:
<https://emergency.copernicus.eu/mapping/ems/online-manual-rapid-mapping-products>.

Map produced by GAF AG released by e-GEOS on the 21/08/2023.
Details on this activation and service conditions available through the QR code or at the link:
<https://rapidmapping.emergency.copernicus.eu/EMSR686/download>



EMSR686 - AOI01
Wildfire in Greece
ARISTINO

Situation as of 21/08/2023 09:25 UTC
Delineation MONIT01 - Detail map 04



Active Flames 23 No.
(68% of total in AOI)
Fire Fronts 2.9 km
(41% of total in AOI)
Burnt area 1,167.1 ha
(14% of total in AOI)

Potentially affected population
~ 50
(8% of total affected)

Potentially Affected Built-up and Transportations

Railway
0.8 km
(8% of total affected)

Road
25.5 km
(11% of total affected)

- Crisis Information**
- Active Flames
 - Fire Fronts
 - Burnt area
 - Built-Up Area**
 - Residential
 - Non residential
- Hydrography**
- Coastline
 - River
 - Stream
 - Lake
 - Open Water
 - River
- Facilities**
- Long-distance pipelines or lines
 - Power plant
- Transportation**
- Main road
 - Local road
 - Track
 - Railway

Event:
A wildfire that started on Saturday, the 19th of August early in the morning (04:49 local time) in a forest area near Aristino village (East Macedonia and Thrace Region) is ongoing.
Residents of the villages Aristino, Loutros, Agnadia, Antheia and Doriko were ordered to evacuate.
Copernicus EMS Rapid Mapping is requested to provide fire extent and damage assessment emergency mapping.

Data sources and analysis:
Pre-event image: Sentinel-2A/B (2023) (acquired on 29/07/2023 at 09:05 UTC, resolution 10 m).
Post-event image: WorldView-3 © Maxar Technologies, Inc. (2023), (acquired on 21/08/2023 at 09:25 UTC, resolution 2.0 m). This image was used as background image.
All images are provided under COPERNICUS by the European Union and ESA, all rights reserved.

Base vector layers: OpenStreetMap © OpenStreetMap contributors (2023), Wikimapia.org, GeoNames 2015, Corine Land Cover (CLC) 2018, EuroBoundaryMap 2017 © EuroGeographics.

Inset maps: JRC 2013, GISCO 2010 © EuroGeographics, Natural Earth 2012, CCM River DB © EUJRC2007, GeoNames 2015.

Population data: GHS Population Grid © European Commission, 2023
https://ghsl.jrc.ec.europa.eu/ghs_pop2023.php

The thematic layer has been derived from post-event satellite image using a semi-automatic approach and by means of visual interpretation. Due to dense smoke, the burnt area delineation is not complete.

Disclaimer: Full disclaimer and other helpful information available in the online manual:
<https://emergency.copernicus.eu/mapping/ems/online-manual-rapid-mapping-products>.

Map produced by GAF AG released by e-GEOS on the 21/08/2023.
Details on this activation and service conditions available through the QR code or at the link:
<https://rapidmapping.emergency.copernicus.eu/EMSR686/download>

Consequences within the AOI				
		Unit of measurement	Affected	Total in AOI
Burnt area		ha		8,529.4
Active Flames		No.		34
Fire Fronts		km		7.0
Estimated population	Number of inhabitants		~ 600	~ 54,000
Built-up	Residential Buildings	ha	5.0	580.7
	Office buildings	ha	0.0	0.9
	Wholesale and retail trade buildings	ha	0.0	2.8
	Industrial buildings	ha	0.0	220.5
	School, university and research buildings	ha	0.0	16.8
	Hospital or institutional care buildings	ha	0.0	1.2
	Military	ha	0.0	211.0
	Cemetery	ha	0.2	11.1
Transportation	Airfield runways	ha	0.0	160.9
	Airfield runways	km	0.0	3.3
	Highways	km	18.3	64.5
	Primary Road	km	2.2	42.8
	Secondary Road	km	0.0	42.0
	Local Road	km	33.0	501.5
	Cart Track	km	171.9	1,005.7
	Long-distance railways	km	9.6	64.3
Facilities	Power plant constructions	ha	7.7	73.4
	Sport and recreation constructions	ha	0.0	40.3
	Long-distance pipelines, communication and electricity lines	km	28.5	77.2
	Dams	km	0.0	0.1
Land use	Shrub and/or herbaceous vegetation association	ha	3,925.4	13,774.3
	Arable land	ha	2,328.3	14,909.1
	Forests	ha	1,147.9	8,882.3
	Heterogeneous agricultural areas	ha	996.6	4,814.7
	Other	ha	126.1	5,693.9
	Pastures	ha	5.1	352.0
	Open spaces with little or no vegetation	ha	0.0	110.0
	Inland wetlands	ha	0.0	39.1
	Coastal wetlands	ha	0.0	1,557.2
	Permanent crops	ha	0.0	236.8

Disclaimer:

Full disclaimer and other helpful information available in the online manual:

<https://emergency.copernicus.eu/mapping/ems/online-manual-rapid-mapping-products>

© European Union / Copernicus Emergency Management Service

Data access:

All data displayed on the map(s), as well as Land Use - Land Cover layer(s), are available in the Crisis Information Package and the Base Layer Package (for reference data).

The table above is available in editable format in the Crisis Information Package.

All products and data are also available for download on the portal.

Access to
the portal



PROGRAMME OF THE
EUROPEAN UNION

